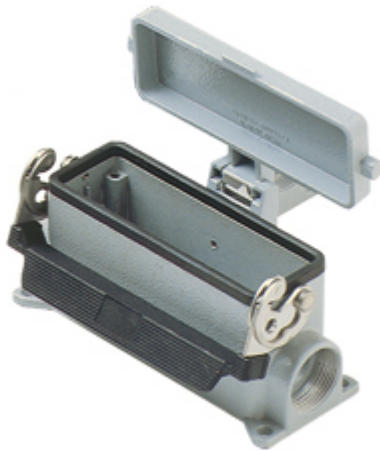


Part number

CHP 24 LS2



Surface mounting housing, C-TYPE series, with 1 lever, Pg21 x 2 cable entry, size "104.27", with metal cover

Product description

| | |
|----------------------|------------------------------|
| Product type | Surface mounting housing |
| Series | C-TYPE |
| Closing type | With 1 lever |
| Size | Size 104.27 |
| Cable entry | With cable entry Pg21 x 2 |
| Specification | With metal cover |

Technical data

IP degree of protection IP65

Further technical details

| | |
|---|----------------|
| Weight | 419,00 g |
| Operating temperature range (min, max) | -40°C...+125°C |

Material properties

| | |
|------------------------------|---|
| Other materials | Lever: Stainless steel, polyamide (PA) Gasket: NBR |
| Colour | RAL 7040 grey |
| RoHs conformity | Compliant |
| China RoHs - EFUP | E |
| REACH SVHC substances | No |

Approvals / Standards

| | |
|-----------------------|---------|
| Certifications | DNV, BV |
| UL | ECBT2 |
| cUL | ECBT8 |

General ordering information

EAN13 code 8015747022620

Packaging Information

| | |
|----------------------------------|-----------------------|
| Packaging length | 475,00 mm |
| Packaging height | 180,00 mm |
| Packaging width | 200,00 mm |
| Packaging weight | 4,70 kg |
| Packaging volume | 17,10 dm ³ |
| Packaging description | Carton box |
| Packaging quantity | 10 Pcs |
| Packaging EAN code | 8015747022637 |
| Sub-packaging weight | 2,35 kg |
| Sub-packaging description | Carton box |
| Sub-packaging quantity | 5 Pcs |
| Sub-packaging EAN barcode | 8015747022644 |

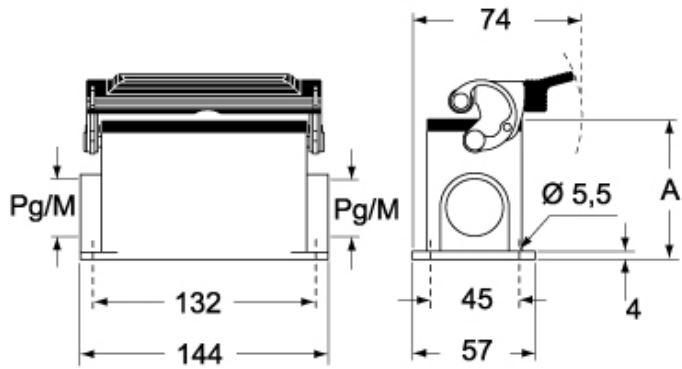
Part number

CHP 24 LS2

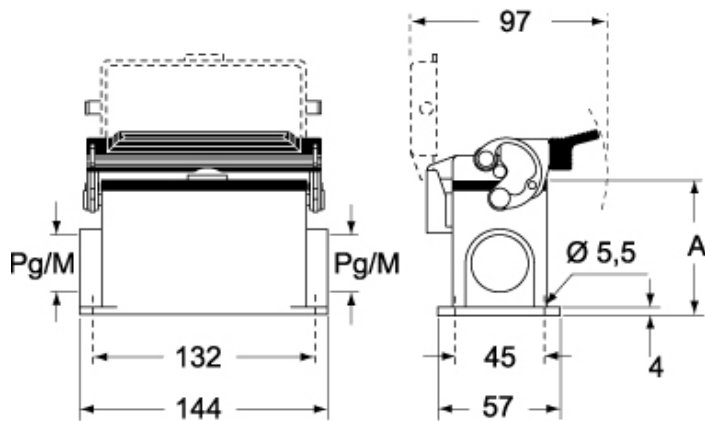


Catalogue drawings

CHP L CAP L - MHP L MAP L



CHP LS CAP LS - MHP LS MAP LS



| | A |
|-----------------|----|
| CHP L / MHP L | 63 |
| CAP L / MAP L | 80 |
| CHP LS / MHP LS | 63 |
| CAP LS / MAP LS | 80 |