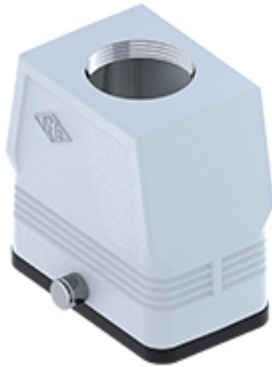


Part number

# CFV 10 GYC29



Hood, CENTRAL LEVER series, with 2 pegs, Pg29 top cable entry without adapter, size "57.27", high construction

| Product description                           |                         | Material properties                 |                   |
|---|-------------------------|-------------------------------------|-------------------|
| <b>Product type</b>                           | Hood                    | <b>Other materials</b>              | Gasket: NBR       |
| <b>Series</b>                                 | CENTRAL LEVER           | <b>Colour</b>                       | RAL 7040 grey     |
| <b>Closing type</b>                           | With 2 pegs             | <b>RoHs conformity</b>              | Compliant         |
| <b>Size</b>                                   | Size 57.27              | <b>China RoHs - EFUP</b>            | E                 |
| <b>Cable entry</b>                            | Top cable entry<br>Pg29 | <b>REACH SVHC substances</b>        | No                |
| <b>Specification</b>                          | High construction       | <b>Approvals / Standards</b>        |                   |
| <b>Technical data</b>                         |                         | <b>UL</b>                           | ECBT2             |
| <b>IP degree of protection</b>                | IP65                    | <b>cUL</b>                          | ECBT8             |
| <b>Further technical details</b>              |                         | <b>General ordering information</b> |                   |
| <b>Weight</b>                                 | 0,50 g                  | <b>EAN13 code</b>                   | 8015747266987     |
| <b>Operating temperature range (min, max)</b> | -40°C...+125°C          | <b>Packaging Information</b>        |                   |
|   |                         | <b>Packaging length</b>             | 150,00 mm         |
|   |                         | <b>Packaging height</b>             | 160,00 mm         |
|   |                         | <b>Packaging width</b>              | 300,00 mm         |
|   |                         | <b>Packaging description</b>        | Carton box        |
|   |                         | <b>Packaging quantity</b>           | 20 Pcs            |
|   |                         | <b>Packaging EAN code</b>           | 8015747044530     |
|   |                         | <b>Sub-packaging description</b>    | Plastic packaging |
|   |                         | <b>Sub-packaging quantity</b>       | 5 Pcs             |
|   |                         | <b>Sub-packaging EAN barcode</b>    | 8015747044578     |

Part number

# CFV 10 GYC29



Catalogue drawings

