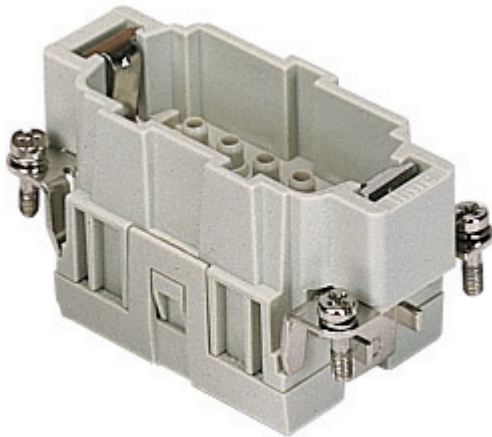



Part number

CCEM 10



Male insert, CCE series, crimp connection, 10 poles + PE, 16 A 500 V 6 kV 3, size "57.27"

Product description		Material properties	
Product type	Insert	Main material	Polycarbonate (PC)
Series	CCE	Colour	RAL 7032 grey
Connection type	Crimp connection	RoHs conformity	Compliant
Gender	Male	China RoHs - EFUP	E
N. of poles	10 poles + 	REACH SVHC substances	No
Size	Size 57.27	Approvals / Standards	
Technical data		Reference standard	EN 61984:2009-06
Current	16 A	Certifications	CSA, CQC, DNV, BV, EAC
Voltage	500 V	UL	ECBT2, PVVA2
Rated impulse withstand voltage	6 kV	cUL	PVVA8
Pollution degree	3	General ordering information	
Rated voltage according to UL/CSA	600 V	EAN13 code	8015747112659
IP degree of protection	IP20 without enclosure, IP65/IP66/IP68/IP69 with enclosure	eCl@ss 8.1	27440205
Further technical details		ETIM 7.0	EC000438
Characteristics according to EN 61984	16A 500V 6kV 3; 16A 400/690V 6kV 2	Packaging Information	
Mating cycles	≥ 500	Packaging length	210,00 mm
Insulation resistance	≥ 10 GΩ	Packaging height	75,00 mm
Contact resistance	≤ 1 mΩ	Packaging width	180,00 mm
Weight	46,00 g	Packaging weight	1,78 kg
Operating temperature range (min, max)	-40 °C ... +125 °C	Packaging volume	2,84 dm ³
UL 94 flammability rating	V-0	Packaging description	Carton box
		Packaging quantity	30 Pcs
		Packaging EAN code	8015747112819
		Sub-packaging length	67,00 mm
		Sub-packaging height	36,00 mm
		Sub-packaging width	180,00 mm
		Sub-packaging weight	0,30 kg
		Sub-packaging volume	0,43 dm ³
		Sub-packaging description	Carton tray
		Sub-packaging quantity	5 Pcs
		Sub-packaging EAN barcode	8015747112826

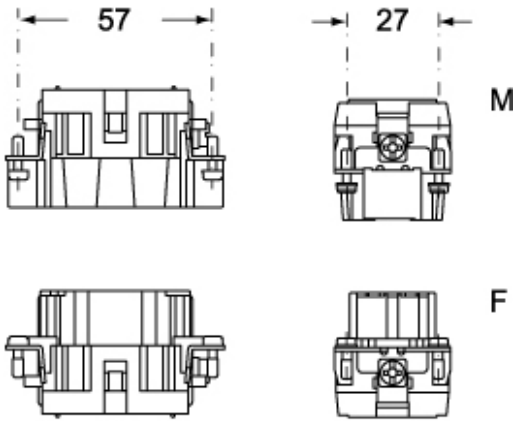
Part number

CCEM 10

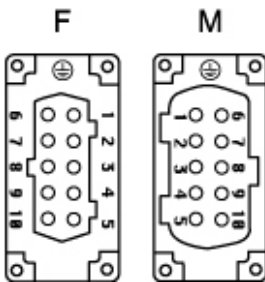


Catalogue drawings

CCEM 10



CCEF 10



Catalogue drawings

diagram CN, CNE and CCE 10 poles

