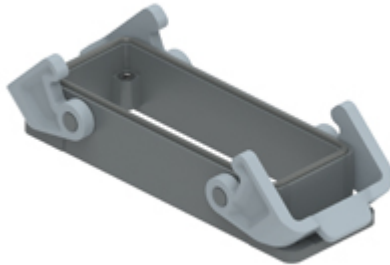


Part number

TCHI 24 B



Bulkhead mounting housing, T-TYPE series, with 2 levers, size "104.27", with integrated protective PE jumpers

Product description

| | |
|----------------------|---------------------------------------|
| Product type | Bulkhead mounting housing |
| Series | T-TYPE |
| Closing type | With 2 levers |
| Size | Size 104.27 |
| Cable entry | Without cable entry |
| Specification | With integrated protective PE jumpers |

Technical data

| | |
|--------------------------------|------|
| IP degree of protection | IP65 |
|--------------------------------|------|

Further technical details

| | |
|---|-----------------|
| Weight | 0,20 g |
| Operating temperature range (min, max) | -40°C ... +90°C |

Material properties

| | |
|------------------------------|---|
| Main material | Polypropylene (PP) |
| Other materials | Lever: Polyamide (PA) Gasket: polyurethane (PUR) PE jumpers: galvanized brass |
| Colour | RAL 7012 grey, RAL 7001 grey |
| RoHs conformity | Compliant |
| China RoHs - EFUP | E |
| REACH SVHC substances | No |

Approvals / Standards

| | |
|------------|-------|
| UL | ECBT2 |
| cUL | ECBT8 |

General ordering information

| | |
|-------------------|---------------|
| EAN13 code | 8015747277211 |
| eCl@ss 8.1 | 27440202 |
| ETIM 7.0 | EC000437 |

Packaging Information

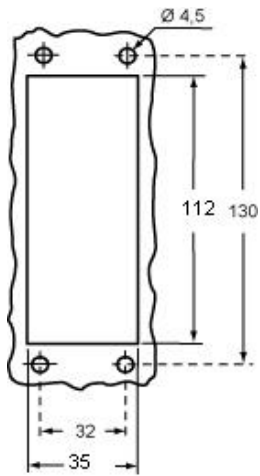
| | |
|----------------------------------|-----------------------|
| Packaging length | 365,00 mm |
| Packaging height | 195,00 mm |
| Packaging width | 305,00 mm |
| Packaging volume | 21,71 dm ³ |
| Packaging description | Carton box |
| Packaging quantity | 40 Pcs |
| Packaging EAN code | 8015747301107 |
| Sub-packaging description | Plastic packaging |
| Sub-packaging quantity | 5 Pcs |
| Sub-packaging EAN barcode | 8015747301114 |

Part number

TCHI 24 B



Catalogue drawings



Catalogue drawings

