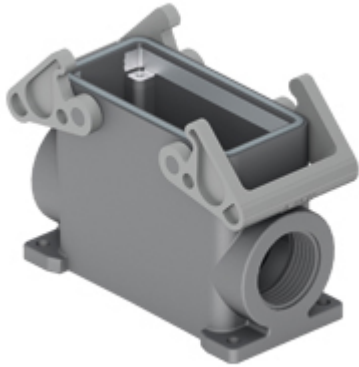


Part number

TAPW 16.32B



Surface mounting housing, T-TYPE /W series, with 2 levers, M32 cable entry, size "77.27", with integrated protective PE jumpers

Product description

Product type	Surface mounting housing
Series	T-TYPE /W
Closing type	With 2 levers
Size	Size 77.27
Cable entry	With cable entry M32
Specification	With integrated protective PE jumpers

Technical data

IP degree of protection IP66 / IP69

Further technical details

Weight	0,50 g
Operating temperature range (min, max)	-40°C ... +90°C

Material properties

Main material	Polypropylene (PP)
Other materials	Lever: Polyamide (PA) Gasket: FKM PE jumpers: galvanized brass
Colour	RAL 7012 grey, RAL 7001 grey
RoHs conformity	Compliant
China RoHs - EFUP	E
REACH SVHC substances	No

Approvals / Standards

UL	ECBT2
cUL	ECBT8

General ordering information

EAN13 code 8015747277747

Packaging Information

Packaging length	310,00 mm
Packaging height	220,00 mm
Packaging width	280,00 mm
Packaging volume	19,10 dm ³
Packaging description	Carton box
Packaging quantity	20 Pcs
Packaging EAN code	8015747299572
Sub-packaging description	Plastic packaging
Sub-packaging quantity	5 Pcs
Sub-packaging EAN barcode	8015747299589

Part number

TAPW 16.32B



Catalogue drawings

