


Part number

# SQE 3275.5



Interlocked switched socket-outlet, SQE series, 3 poles + N + PE, 7 h (black), 32 A, 277/480 ÷ 288/500 V, without fuse-carrier

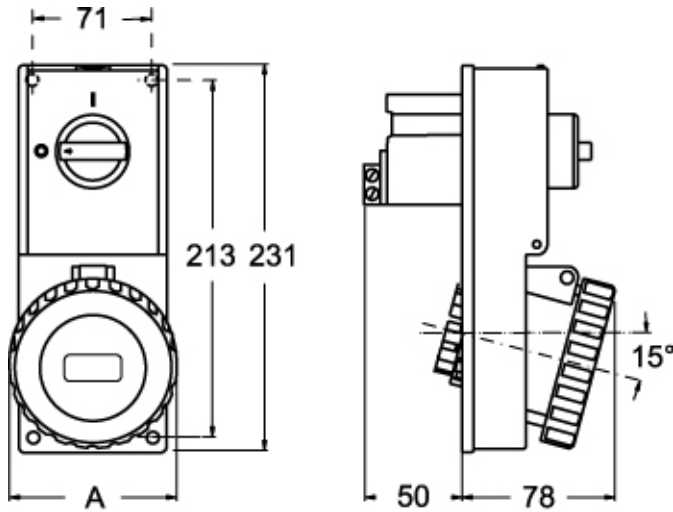
Product description		Material properties	
<b>Product type</b>	Interlocked switched socket-outlet	<b>Colour</b>	RAL 7035 grey, RAL 9005 black
<b>Series</b>	SQE	<b>Approvals / Standards</b>	
<b>N. of poles</b>	3 poles + N + 	<b>Reference standard</b>	EN 60309-1, -2 e -4
<b>Clock position</b>	7	<b>General ordering information</b>	
<b>Specification</b>	Without fuse-carrier	<b>EAN13 code</b>	8015747087001
Technical data		Packaging Information	
<b>Current</b>	32 A	<b>Sub-packaging weight</b>	0,69 kg
<b>Voltage</b>	277/480 ÷ 288/500 V	<b>Sub-packaging description</b>	Carton box
<b>IP degree of protection</b>	IP55	<b>Sub-packaging quantity</b>	1 Pcs
Further technical details		<b>Sub-packaging EAN barcode</b>	8015747109406
<b>Weight</b>	690,00 g		
<b>Operating temperature range (min, max)</b>	-25°C ... +40°C		
<b>IK rating (impact degree of protection)</b>	IK08		

Part number

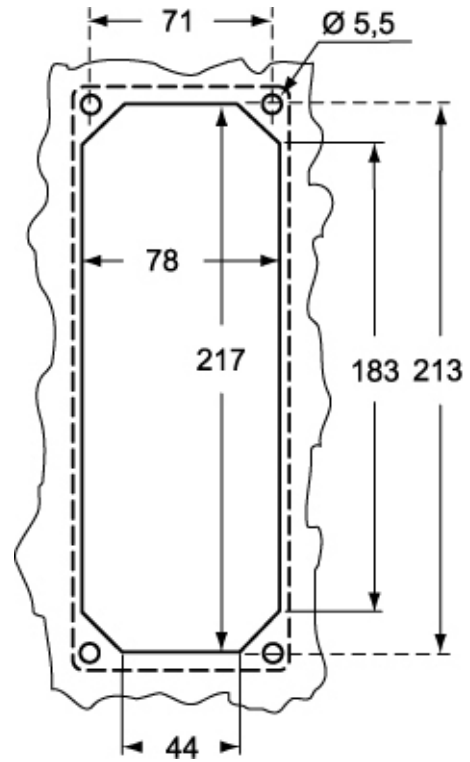
# SQE 3275.5



Catalogue drawings



Catalogue drawings



SQE.5		A
32A	2P+⊕	92
	3P+⊕	92
	3P+N+⊕	100