


Part number

# SQE 32123.5



Interlocked switched socket-outlet, SQE series, 2 poles + PE, 12 h (white), 32 A, without fuse-carrier

| Product description                            |   |
|--|---|
| <b>Product type</b>                            | Interlocked switched socket-outlet  |
| <b>Series</b>                                  | SQE   |
| <b>N. of poles</b>                             | 2 poles +  |
| <b>Clock position</b>                          | 12  |
| <b>Specification</b>                           | Without fuse-carrier  |
| Technical data                                 |   |
| <b>Current</b>                                 | 32 A  |
| <b>Voltage</b>                                 | ins. transformer  |
| <b>IP degree of protection</b>                 | IP55  |
| Further technical details                      |   |
| <b>Operating temperature range (min, max)</b>  | -25°C ... +40°C   |
| <b>IK rating (impact degree of protection)</b> | IK08  |

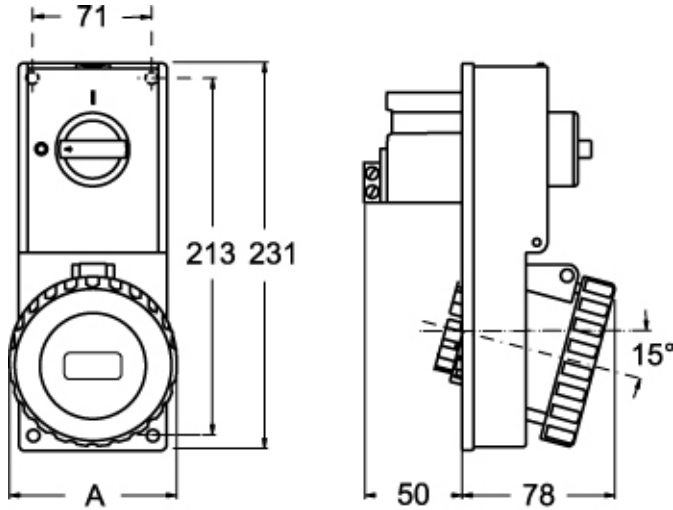
| Material properties          |                               |
|------------------------------|-------------------------------|
| <b>Colour</b>                | RAL 7035 grey, RAL 9010 white |
| Approvals / Standards        |                               |
| <b>Reference standard</b>    | EN 60309-1, -2 e -4           |
| General ordering information |                               |
| <b>EAN13 code</b>            | 8015747159968                 |

Part number

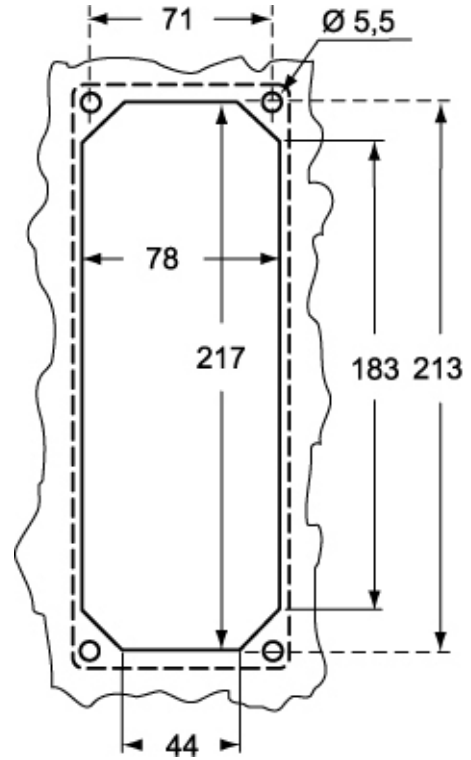
# SQE 32123.5



Catalogue drawings



Catalogue drawings



| SQE.5 |        | A   |
|-------|--------|-----|
| 32A   | 2P+⊕   | 92  |
|       | 3P+⊕   | 92  |
|       | 3P+N+⊕ | 100 |