


Part number

SQE 32114



Interlocked switched socket-outlet, SQE series, 3 poles + PE, 11 h (red), 32 A, 440 ÷ 460 V, without fuse-carrier

| Product description | |
|--|---|
| Product type | Interlocked switched socket-outlet |
| Series | SQE |
| N. of poles | 3 poles +  |
| Clock position | 11 |
| Specification | Without fuse-carrier |
| Technical data | |
| Current | 32 A |
| Voltage | 440 ÷ 460 V |
| IP degree of protection | IP44 |
| Further technical details | |
| Weight | 584,00 g |
| Operating temperature range (min, max) | -25°C ... +40°C |
| IK rating (impact degree of protection) | IK08 |

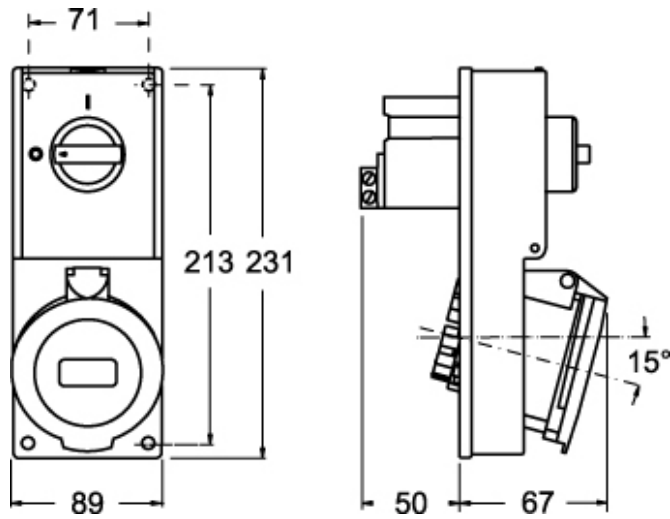
| Material properties | |
|----------------------------------|--|
| Colour | RAL 7035 grey, RAL 3000 red |
| RoHs conformity | Compliant with exemption 6(c): copper alloy containing up to 4% lead by weight |
| China RoHs - EFUP | 50 |
| REACH SVHC substances | Yes Lead |
| SCIP number | Ce861c8d-b979-403b-96d9-80aef6dc281d |
| Approvals / Standards | |
| Reference standard | EN 60309-1, -2 e -4 |
| General ordering information | |
| EAN13 code | 8015747086271 |
| Packaging Information | |
| Sub-packaging length | 116,00 mm |
| Sub-packaging height | 103,00 mm |
| Sub-packaging width | 230,00 mm |
| Sub-packaging weight | 0,58 kg |
| Sub-packaging volume | 2,75 dm ³ |
| Sub-packaging description | Carton box |
| Sub-packaging quantity | 1 Pcs |
| Sub-packaging EAN barcode | 8015747086288 |

Part number

SQE 32114



Catalogue drawings



Catalogue drawings

