


Part number

# SQE 1625



Interlocked switched socket-outlet, SQE series, 3 poles + N + PE, 2 h (green), 16 A, > 50 V, without fuse-carrier

| Product description                            |   |
|--|---|
| <b>Product type</b>                            | Interlocked switched socket-outlet  |
| <b>Series</b>                                  | SQE   |
| <b>N. of poles</b>                             | 3 poles + N +  |
| <b>Clock position</b>                          | 2   |
| <b>Specification</b>                           | Without fuse-carrier  |
| Technical data                                 |   |
| <b>Current</b>                                 | 16 A  |
| <b>Voltage</b>                                 | > 50 V  |
| <b>IP degree of protection</b>                 | IP44  |
| Further technical details                      |   |
| <b>Operating temperature range (min, max)</b>  | -25°C ... +40°C   |
| <b>IK rating (impact degree of protection)</b> | IK08  |

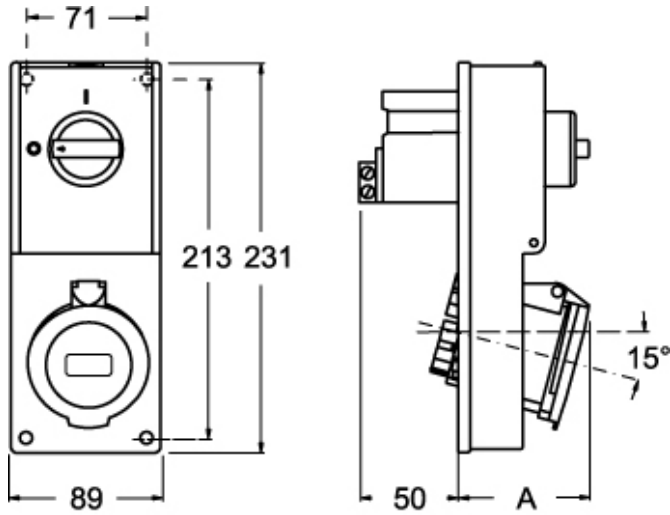
| Material properties          |                               |
|------------------------------|-------------------------------|
| <b>Colour</b>                | RAL 7035 grey, RAL 6017 green |
| Approvals / Standards        |                               |
| <b>Reference standard</b>    | EN 60309-1, -2 e -4           |
| General ordering information |                               |
| <b>EAN13 code</b>            | 8015747159814                 |

Part number

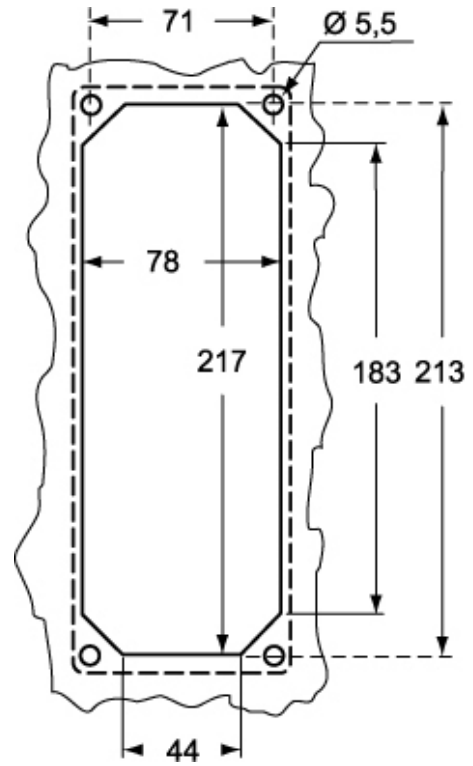
# SQE 1625



Catalogue drawings



Catalogue drawings



| SQE |        | A  |
|-----|--------|----|
| 16A | 2P+⊕   | 64 |
|     | 3P+⊕   | 65 |
|     | 3P+N+⊕ | 67 |