


Part number

# PEW 16115 SM



Wall-mounting plug, PLUSO series, 3 poles + N + PE, 11 h (red), 16 A, 250/440 ÷ 265/460 V

## Product description

<b>Product type</b>	Plug Wall-mounting
<b>Series</b>	PEW...SM, PLUSO
<b>N. of poles</b>	3 poles + N + 
<b>Clock position</b>	11

## Technical data

<b>Current</b>	16 A
<b>Voltage</b>	250/440V ÷ 265/460V
<b>IP degree of protection</b>	IP67

## Further technical details

<b>Operating temperature range (min, max)</b>	-25°C ... +40°C
---	-----------------

## Material properties

<b>Colour</b>	RAL 7035 grey, RAL 3000 red
---------------	-----------------------------

## Approvals / Standards

<b>Reference standard</b>	EN 60309-1 and -2
---------------------------	-------------------

## General ordering information

<b>EAN13 code</b>	8015747156561
-------------------	---------------

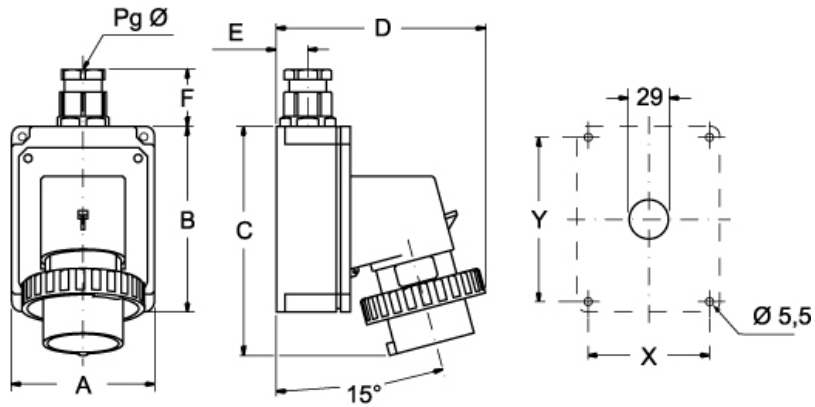
Part number

# PEW 16115 SM



Catalogue drawings

(16 / 32A) PEW ... SM



PEW ... SM		A	B	C	D	E	F	X	Y	Pg Ø
<b>16A</b>	2P+⊕	75	115	144	126	19	35	65	105	16
	3P+⊕	75	115	144	134	19	35	65	105	16
	3P+N+⊕	100	130	164	145	22	42	85	115	21
<b>32A</b>	2P+⊕	100	130	178	154	22	42	85	115	21
	3P+⊕	100	130	178	154	22	42	85	115	21
	3P+N+⊕	100	130	178	160	22	42	85	115	21