

Part number

# PE 1673 SI



Flush-mounting plug, PLUSO series, 2 poles + PE, 7 h (black), 16 A, 480 ÷ 500 V

#### Product description

<b>Product type</b>	Plug Flush-mounting
<b>Series</b>	PE...SI, PLUSO
<b>N. of poles</b>	2 poles + 
<b>Clock position</b>	7

#### Technical data

<b>Current</b>	16 A
<b>Voltage</b>	480 ÷ 500 V
<b>IP degree of protection</b>	IP44

#### Further technical details

<b>Operating temperature range (min, max)</b>	-25°C ... +40°C
---	-----------------

#### Material properties

<b>Colour</b>	RAL 7035 grey, RAL 9005 black
---------------	-------------------------------

#### Approvals / Standards

<b>Reference standard</b>	EN 60309-1 and -2
---------------------------	-------------------

#### General ordering information

<b>EAN13 code</b>	8015747155090
-------------------	---------------

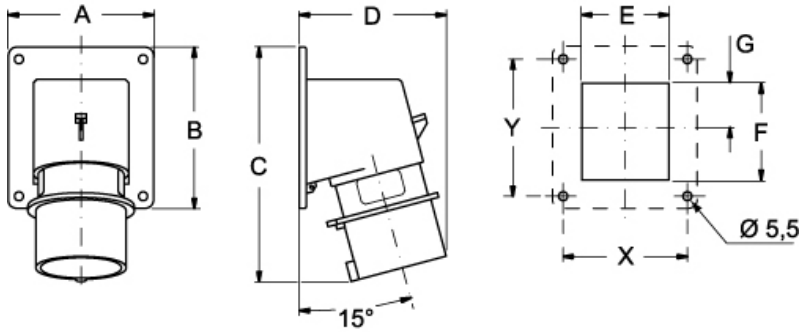
Part number

# PE 1673 SI



Catalogue drawings

(16 / 32A) PE ... SI



PE ... SI	A	B	C	D	E	F	G	X	Y
<b>16A</b> 2P+⊕	65	82	126	81	41	43	21,5	52	60
	65	82	126	81	47	43	21,5	52	60
	90	100	146	93	54	60	27,5	77	85
<b>32A</b> 2P+⊕	90	100	160	101	55	60	27,5	77	85
	90	100	160	101	55	60	27,5	77	85
	90	100	160	106	62	60	27,5	77	85