


Part number

PE 1665 SI



Flush-mounting plug, PLUSO series, 3 poles + N + PE, 6 h (red), 16 A, 380 ÷ 415 V

Product description		Material properties	
Product type	Plug Flush-mounting	Colour	RAL 7035 grey, RAL 3000 red
Series	PE...SI, PLUSO	RoHs conformity	Compliant with exemption 6(c): copper alloy containing up to 4% lead by weight
Connection type	Screw terminal connection	China RoHs - EFUP	50
N. of poles	3 poles + N + 	REACH SVHC substances	Yes Lead
Clock position	6	SCIP number	Ca7de37f-add8-4b77-9861-279c94903ade
Size	Socket fixing centre distance 77 x 85 mm	Approvals / Standards	
Technical data		Reference standard	EN 60309-1 and -2
Current	16 A	General ordering information	
Voltage	380 ÷ 415 V	EAN13 code	8015747064859
IP degree of protection	IP44	Packaging Information	
Further technical details		Packaging length	330,00 mm
Weight	176,50 g	Packaging height	175,00 mm
Operating temperature range (min, max)	-25°C ... +40°C	Packaging width	295,00 mm
		Packaging weight	2,11 kg
		Packaging volume	17,04 dm ³
		Packaging description	Carton box
		Packaging quantity	10 Pcs
		Packaging EAN code	8015747064866

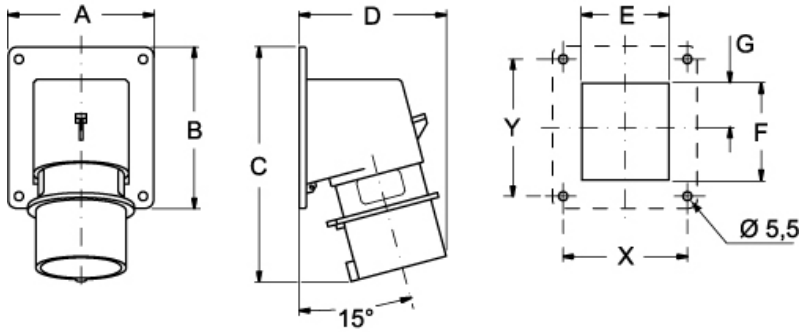
Part number

PE 1665 SI



Catalogue drawings

(16 / 32A) PE ... SI



PE ... SI	A	B	C	D	E	F	G	X	Y
16A 2P+⊕	65	82	126	81	41	43	21,5	52	60
	65	82	126	81	47	43	21,5	52	60
	90	100	146	93	54	60	27,5	77	85
32A 2P+⊕	90	100	160	101	55	60	27,5	77	85
	90	100	160	101	55	60	27,5	77	85
	90	100	160	106	62	60	27,5	77	85