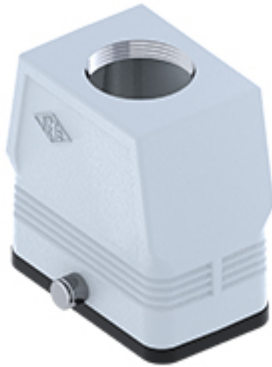


Part number

MFV 10 GYC25



Hood, CENTRAL LEVER series, with 2 pegs, M25 top cable entry without adapter, size "57.27", high construction

Product description

Product type	Hood
Series	CENTRAL LEVER
Closing type	With 2 pegs
Size	Size 57.27
Cable entry	Top cable entry M25
Specification	High construction

Technical data

IP degree of protection IP65

Further technical details

Weight	0,50 g
Operating temperature range (min, max)	-40°C...+125°C

Material properties

Other materials	Gasket: NBR
Colour	RAL 7040 grey
RoHs conformity	Compliant
China RoHs - EFUP	E
REACH SVHC substances	No

Approvals / Standards

UL	ECBT2
cUL	ECBT8

General ordering information

EAN13 code	8015747266994
eCl@ss 8.1	27440202
ETIM 7.0	EC000437

Packaging Information

Packaging length	150,00 mm
Packaging height	160,00 mm
Packaging width	300,00 mm
Packaging description	Carton box
Packaging quantity	20 Pcs
Packaging EAN code	8015747044516
Sub-packaging description	Plastic packaging
Sub-packaging quantity	5 Pcs
Sub-packaging EAN barcode	8015747044523

Part number

MFV 10 GYC25



Catalogue drawings

