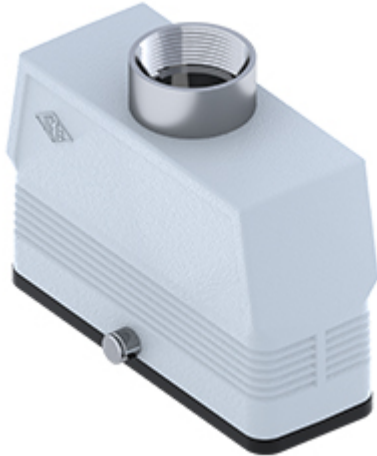


Part number

MAV 24 GYC40



Hood, CENTRAL LEVER series, with 2 pegs, M40 top cable entry, size "104.27", high construction

Product description

| | |
|----------------------|----------------------------------|
| Product type | Hood |
| Series | CENTRAL LEVER |
| Closing type | With 2 pegs |
| Size | Size 104.27 |
| Cable entry | Top cable entry with adapter M40 |
| Specification | High construction |

Technical data

IP degree of protection IP65

Further technical details

| | |
|---|----------------|
| Weight | 412,50 g |
| Operating temperature range (min, max) | -40°C...+125°C |

Material properties

| | |
|------------------------------|--|
| Other materials | Gasket: NBR |
| Colour | RAL 7040 grey |
| RoHs conformity | Compliant with exemption 6(c): copper alloy containing up to 4% lead by weight |
| China RoHs - EFUP | 50 |
| REACH SVHC substances | Yes Lead |
| SCIP number | 15deaf78-e939-4401-a0b0-e2228ca32a03 |

Approvals / Standards

| | |
|------------|-------|
| UL | ECBT2 |
| cUL | ECBT8 |

General ordering information

| | |
|-------------------|---------------|
| EAN13 code | 8015747259187 |
| eCl@ss 8.1 | 27440202 |
| ETIM 7.0 | EC000437 |

Packaging Information

| | |
|----------------------------------|-------------------|
| Sub-packaging weight | 2,06 kg |
| Sub-packaging description | Plastic packaging |
| Sub-packaging quantity | 5 Pcs |
| Sub-packaging EAN barcode | 8015747259194 |

Part number

MAV 24 GYC40



Catalogue drawings

