

Part number

# M7PE 06 L20



Surface mounting housing, E-Xtreme® V-TYPE series, with 1 lever, M20 cable entry, size "44.27"

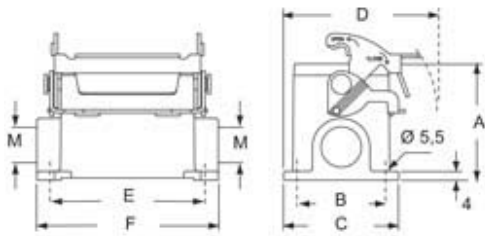
Product description		Material properties	
<b>Product type</b>	Surface mounting housing	<b>Other materials</b>	Lever: Stainless steel Gasket: FKM
<b>Series</b>	E-Xtreme® V-TYPE	<b>Colour</b>	RAL 7016 grey
<b>Closing type</b>	With 1 lever	<b>RoHS conformity</b>	Compliant
<b>Size</b>	Size 44.27	<b>China RoHS - EFUP</b>	E
<b>Cable entry</b>	With cable entry M20	<b>REACH SVHC substances</b>	No
Technical data		Approvals / Standards	
<b>IP degree of protection</b>	IP66 / IP67 / IP69	<b>Certifications</b>	DNV, BV
Further technical details		<b>UL</b>	ECBT2
<b>Weight</b>	200,00 g	<b>cUL</b>	ECBT8
<b>Operating temperature range (min, max)</b>	-40°C...+125°C	General ordering information	
		<b>EAN13 code</b>	8015747250504
		<b>eCl@ss 8.1</b>	27440202
		<b>ETIM 7.0</b>	EC000437
		Packaging Information	
		<b>Packaging length</b>	475,00 mm
		<b>Packaging height</b>	160,00 mm
		<b>Packaging width</b>	140,00 mm
		<b>Packaging weight</b>	2,30 kg
		<b>Packaging volume</b>	10,64 dm <sup>3</sup>
		<b>Packaging description</b>	Carton box
		<b>Packaging quantity</b>	10 Pcs
		<b>Packaging EAN code</b>	8015747250634
		<b>Sub-packaging weight</b>	1,15 kg
		<b>Sub-packaging description</b>	Plastic packaging
		<b>Sub-packaging quantity</b>	5 Pcs
		<b>Sub-packaging EAN barcode</b>	8015747250641

Part number

# M7PE 06 L20



## Catalogue drawings



type	A	B	C	D	E	F
M7PE 06 L	53	40	52	70	70	82
M7APE 06 L	73	45	57	72,5	70	82

---