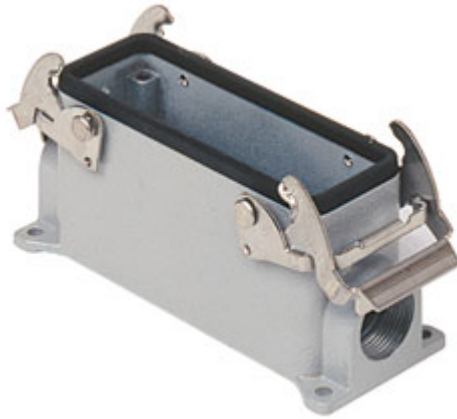


Part number

M7P 16.25



Surface mounting housing, V-TYPE series, with 2 levers, M25 cable entry, size "77.27"

Product description

Product type	Surface mounting housing
Series	V-TYPE
Closing type	With 2 levers
Size	Size 77.27
Cable entry	With cable entry M25

Technical data

IP degree of protection IP66 / IP67 / IP69

Further technical details

Weight	344,00 g
Operating temperature range (min, max)	-40°C...+125°C

Material properties

Other materials	Lever: Stainless steel Gasket: NBR
Colour	RAL 7040 grey
RoHs conformity	Compliant
China RoHs - EFUP	E
REACH SVHC substances	No

Approvals / Standards

Certifications	DNV, BV
UL	ECBT2
cUL	ECBT8

General ordering information

EAN13 code	8015747093583
eCl@ss 8.1	27440202
ETIM 7.0	EC000437

Packaging Information

Packaging length	295,00 mm
Packaging height	160,00 mm
Packaging width	300,00 mm
Packaging weight	7,13 kg
Packaging volume	14,16 dm ³
Packaging description	Carton box
Packaging quantity	20 Pcs
Packaging EAN code	8015747178297
Sub-packaging weight	1,78 kg
Sub-packaging description	Plastic packaging
Sub-packaging quantity	5 Pcs
Sub-packaging EAN barcode	8015747178303

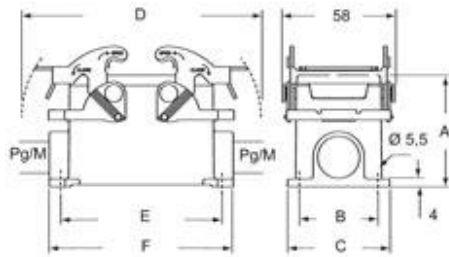
Part number

M7P 16.25



Catalogue drawings

C7P - C7AP M7P - M7AP



	A	B	C	D	E	F
C7P/M7P 10	57	40	52	122	82	93,5
C7P/M7P 16	63	45	57	142,5	105	117
C7P/M7P 24	63	45	57	169	132	144
C7AP/M7AP 10	73	45	57	122	82	93,5
C7AP/M7AP 16	77	45	57	142,5	105	117
C7AP/M7AP 24	80	45	57	169	132	144