


Part number

KI 1663 EB6



Interlocked switched socket-outlet, EB6 series, 2 poles + PE, 6 h (blue), 16 A, 200 ÷ 250 V, without fuse-carrier

| Product description | | Material properties | |
|--|---|-------------------------------------|--|
| Product type | Interlocked switched socket-outlet | Colour | RAL 7035 grey, RAL 5015 blue |
| Series | KI...EB6 | | Compliant with exemption 6(c): copper alloy containing up to 4% lead by weight |
| N. of poles | 2 poles +  | RoHs conformity | 6(c): copper alloy containing up to 4% lead by weight |
| Clock position | 6 | China RoHs - EFUP | 50 |
| Size | 114x228 fixing plates FC xx41 TB | REACH SVHC substances | Yes Lead |
| Cable entry | M25 | SCIP number | Ce861c8d-b979-403b-96d9-80aef6dc281d |
| Specification | Without fuse-carrier | Approvals / Standards | |
| Technical data | | Reference standard | EN 60309-1, -2 e -4 |
| Current | 16 A | General ordering information | |
| Voltage | 200 ÷ 250 V | EAN13 code | 8015747192576 |
| IP degree of protection | IP66 | Packaging Information | |
| Further technical details | | Packaging length | 520,00 mm |
| Weight | 854,00 g | Packaging height | 305,00 mm |
| Operating temperature range (min, max) | -25°C ... +40°C | Packaging width | 490,00 mm |
| IK rating (impact degree of protection) | IK10 | Packaging weight | 15,45 kg |
| | | Packaging volume | 77,71 dm ³ |
| | | Packaging description | Carton box |
| | | Packaging quantity | 15 Pcs |
| | | Packaging EAN code | 8015747196611 |
| | | Sub-packaging length | 270,00 mm |
| | | Sub-packaging height | 125,00 mm |
| | | Sub-packaging width | 120,00 mm |
| | | Sub-packaging weight | 1,03 kg |
| | | Sub-packaging volume | 4,05 dm ³ |
| | | Sub-packaging description | Carton box |
| | | Sub-packaging quantity | 1 Pcs |
| | | Sub-packaging EAN barcode | 8015747192644 |



Catalogue drawings

KI .. EB6 interlocked socket-outlets without fuse carrier



- Compliant with EN 60309-1, 2 e 4
- Enclosures and inserts in insulating self-extinguishing thermoplastic material, RAL 7035 grey
- 16A and 32A types with spring lid
- Factory installed internal wiring
- Cable entry with threaded metric opening
- 'ZG' series switch, with 32A rating
- Mechanical interlock that prevents:
 - the switch from being turned on without the plug inserted and the plug from being removed while the switch is on
- Lockable switch
- Inspection panel, openable only when the switch is off.

**16A
IP66 degree of protection**



**32A
IP66 degree of protection**



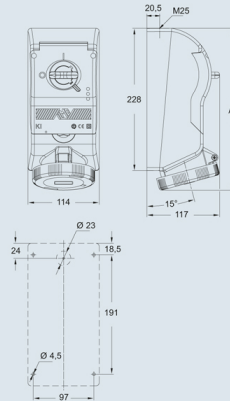
| Poles | Frequency Hz | Voltage V | Earthing contact position h | Part No. | Colour | Part No. | Colour | |
|-------------|---------------|-------------------|-----------------------------|--------------|-------------|--------------|-------------|--------|
| 2P+Ⓢ | 50 and 60 | 100 + 130 | 4 | KI 1643 EB6 | Yellow | KI 3243 EB6 | Yellow | |
| | 50 and 60 | 200 + 250 | 6 | KI 1663 EB6 | Blue | KI 3263 EB6 | Blue | |
| | 50 and 60 | 380 + 415 | 9 | KI 1693 EB6 | Red | KI 3293 EB6 | Red | |
| | 50 and 60 | 480 + 500 | 7 | KI 1673 EB6 | Black | KI 3273 EB6 | Black | |
| | 50 and 60 | ins. transformer | 12 | KI 16123 EB6 | a.v. | KI 32123 EB6 | a.v. | |
| | > 300 + 500 | > 50 | 2 | KI 1623 EB6 | * | KI 3223 EB6 | * | |
| | c.c. | > 50 + 250 | 3 | KI 1633 EB6 | a.v. | KI 3233 EB6 | a.v. | |
| 3P+Ⓢ | 50 and 60 | 100 + 130 | 4 | KI 1644 EB6 | Yellow | KI 3244 EB6 | Yellow | |
| | 50 and 60 | 200 + 250 | 9 | KI 1694 EB6 | Blue | KI 3294 EB6 | Blue | |
| | 50 and 60 | 380 + 415 | 6 | KI 1664 EB6 | Red | KI 3264 EB6 | Red | |
| | 60 | 440 + 460 | 11 | KI 16114 EB6 | Black | KI 32114 EB6 | Black | |
| | 50 and 60 | 480 + 500 | 7 | KI 1674 EB6 | Black | KI 3274 EB6 | Black | |
| | 50 | 380 | 3 | KI 1634 EB6 | Red | KI 3234 EB6 | Red | |
| | 60 | 440 | 3 | KI 1634 EB6 | Red | KI 3234 EB6 | Red | |
| | 100 + 300 | > 50 | 10 | KI 16104 EB6 | * | KI 32104 EB6 | * | |
| | > 300 + 500 | > 50 | 2 | KI 1624 EB6 | * | KI 3224 EB6 | * | |
| | 3P+N+Ⓢ | 50 and 60 | 57/100 + 75/130 | 4 | KI 1645 EB6 | Yellow | KI 3245 EB6 | Yellow |
| | | 50 and 60 | 120/208 + 144/250 | 9 | KI 1695 EB6 | Blue | KI 3295 EB6 | Blue |
| 50 and 60 | | 200/346 + 240/415 | 6 | KI 1665 EB6 | Red | KI 3265 EB6 | Red | |
| 50 and 60 | | 277/480 + 288/500 | 7 | KI 1675 EB6 | Black | KI 3275 EB6 | Black | |
| 60 | | 250/440 + 255/460 | 11 | KI 16115 EB6 | Black | KI 32115 EB6 | Black | |
| 50 | | 220/380 | 3 | KI 1635 EB6 | Red | KI 3235 EB6 | Red | |
| 60 | | 250/440 | 3 | KI 1635 EB6 | Red | KI 3235 EB6 | Red | |
| > 300 + 500 | | > 50 | 2 | KI 1625 EB6 | * | KI 3225 EB6 | * | |

Legend

A.V. = Colour according to voltage

*) Green may be used together with the colour of the operating range for frequencies above 60 Hz and up to a maximum of 500 Hz

Dimensions in mm



Dimensions indicated are not binding and may be changed without prior notice.

| | poles | A |
|-----|--------|-----|
| 16A | 2P+Ⓢ | 252 |
| | 3P+Ⓢ | 252 |
| | 3P+N+Ⓢ | 252 |
| | 2P+Ⓢ | 260 |
| 32A | 3P+Ⓢ | 260 |
| | 3P+N+Ⓢ | 260 |