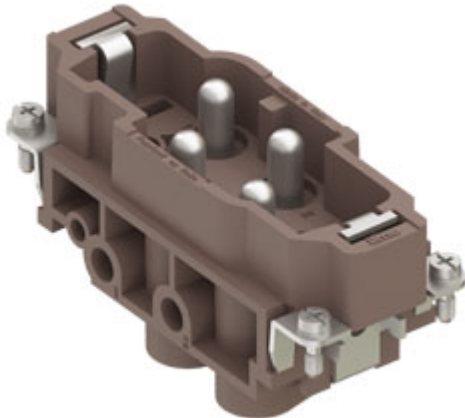



Part number

# CXM 4/0 RY



Male insert, CX RY series, screw terminal connection, 4 poles + PE, 80 A 830 V 8 kV 3, size "77.27", for applications up to 180°C

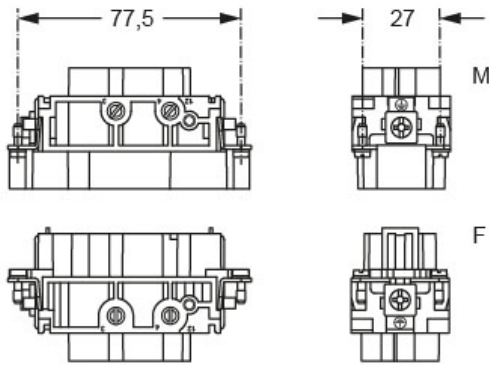
Product description		Material properties	
<b>Product type</b>	Insert	<b>Main material</b>	Polyphenylene sulfide (PPS)
<b>Series</b>	CX RY	<b>Other materials</b>	Contacts: copper alloy
<b>Connection type</b>	Screw terminal connection		Compliant with exemption 6(c): copper alloy containing up to 4% lead by weight
<b>Gender</b>	Male	<b>RoHs conformity</b>	
<b>N. of poles</b>	4 poles + 	<b>China RoHs - EFUP</b>	50
<b>Size</b>	Size 77.27	<b>REACH SVHC substances</b>	Yes Lead
<b>Specification</b>	For applications up to 180°C	<b>SCIP number</b>	1a9c93ff-0445-4a16-81e3-1609ac5274d6
Technical data		Approvals / Standards	
<b>Current</b>	80 A	<b>Reference standard</b>	EN 61984:2009-06
<b>Voltage</b>	830 V	<b>Certifications</b>	CSA, CQC, DNV, BV, EAC
<b>Rated impulse withstand voltage</b>	8 kV	<b>UL</b>	ECBT2
<b>Pollution degree</b>	3	<b>cUL</b>	ECBT8
<b>Rated voltage according to UL/CSA</b>	600 V	General ordering information	
<b>Wire cross-section</b>	4,00 mm <sup>2</sup> - 16,00 mm <sup>2</sup>	<b>EAN13 code</b>	8015747153218
<b>AWG size</b>	12 - 6	<b>eCl@ss 8.1</b>	27440205
<b>Contact type</b>	Turned silver plated	<b>ETIM 7.0</b>	EC000438
<b>IP degree of protection</b>	IP20 without enclosure, IP65 with enclosure	Packaging Information	
Further technical details		<b>Packaging length</b>	245,00 mm
<b>Characteristics according to EN 61984</b>	80A 830V 8kV 3	<b>Packaging height</b>	165,00 mm
<b>Mating cycles</b>	≥ 500	<b>Packaging width</b>	215,00 mm
<b>Insulation resistance</b>	≥ 10 GΩ	<b>Packaging weight</b>	4,00 kg
<b>Contact resistance</b>	≤ 0,3 mΩ	<b>Packaging volume</b>	8,69 dm <sup>3</sup>
<b>Weight</b>	121,33 g	<b>Packaging description</b>	Carton box
<b>Operating temperature range (min, max)</b>	-40°C ... +180°C	<b>Packaging quantity</b>	30 Pcs
<b>UL 94 flammability rating</b>	V-0	<b>Packaging EAN code</b>	8015747153362
		<b>Sub-packaging length</b>	87,00 mm
		<b>Sub-packaging height</b>	36,00 mm
		<b>Sub-packaging width</b>	180,00 mm
		<b>Sub-packaging weight</b>	0,67 kg
		<b>Sub-packaging volume</b>	0,56 dm <sup>3</sup>
		<b>Sub-packaging description</b>	Carton tray
		<b>Sub-packaging quantity</b>	5 Pcs
		<b>Sub-packaging EAN barcode</b>	8015747153379

Part number

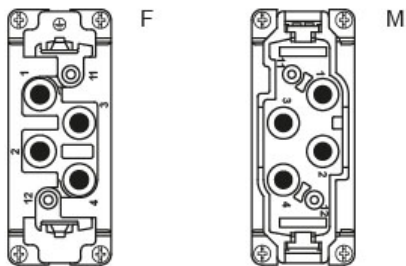
# CXM 4/0 RY



## Catalogue drawings



contacts side (front view)



## Derating curves

CX RY 4/0 poles connector inserts  
Maximum current load derating diagram

