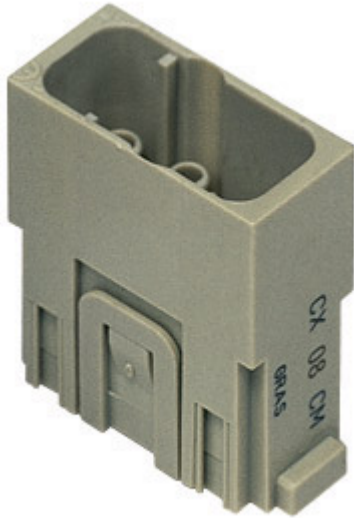


Part number

# CX 08 CM



Male modular insert, Mixo series, crimp connection, 8 poles, 1 module, 16 A 400 V 6 kV 3

#### Product description

|                        |                                         |
|------------------------|-----------------------------------------|
| <b>Product type</b>    | Modular insert                          |
| <b>Series</b>          | Mixo                                    |
| <b>Connection type</b> | Crimp connection                        |
| <b>Gender</b>          | Male                                    |
| <b>N. of poles</b>     | 8 poles                                 |
| <b>Size</b>            | 1 module                                |
| <b>Specification</b>   | Standard & HNM (High Number of Matings) |

#### Technical data

|                                          |                                                            |
|------------------------------------------|------------------------------------------------------------|
| <b>Current</b>                           | 16 A                                                       |
| <b>Voltage</b>                           | 400 V                                                      |
| <b>Rated impulse withstand voltage</b>   | 6 kV                                                       |
| <b>Pollution degree</b>                  | 3                                                          |
| <b>Rated voltage according to UL/CSA</b> | 600 V                                                      |
| <b>IP degree of protection</b>           | IP20 without enclosure, IP65/IP66/IP68/IP69 with enclosure |

#### Further technical details

|                                               |                                    |
|-----------------------------------------------|------------------------------------|
| <b>Characteristics according to EN 61984</b>  | 16A 400V 6kV 3; 16A 400/690V 6kV 2 |
| <b>Insulation resistance</b>                  | ≥ 10 GΩ                            |
| <b>Contact resistance</b>                     | ≤ 1 mΩ                             |
| <b>Weight</b>                                 | 8,60 g                             |
| <b>Operating temperature range (min, max)</b> | -40 °C ... +125 °C                 |
| <b>UL 94 flammability rating</b>              | V-0                                |

#### Material properties

|                              |               |
|------------------------------|---------------|
| <b>Main material</b>         | Polycarbonate |
| <b>Colour</b>                | RAL 7032 grey |
| <b>RoHs conformity</b>       | Compliant     |
| <b>China RoHs - EFUP</b>     | E             |
| <b>REACH SVHC substances</b> | No            |

#### Approvals / Standards

|                           |                        |
|---------------------------|------------------------|
| <b>Reference standard</b> | EN 61984:2009-06       |
| <b>Certifications</b>     | CSA, CQC, DNV, BV, EAC |

#### General ordering information

|                   |               |
|-------------------|---------------|
| <b>EAN13 code</b> | 8015747129220 |
| <b>eCl@ss 8.1</b> | 27440205      |
| <b>ETIM 7.0</b>   | EC000438      |

#### Packaging Information

|                                  |                      |
|----------------------------------|----------------------|
| <b>Packaging length</b>          | 180,00 mm            |
| <b>Packaging height</b>          | 120,00 mm            |
| <b>Packaging width</b>           | 155,00 mm            |
| <b>Packaging weight</b>          | 0,71 kg              |
| <b>Packaging volume</b>          | 3,35 dm <sup>3</sup> |
| <b>Packaging description</b>     | Carton box           |
| <b>Packaging quantity</b>        | 60 Pcs               |
| <b>Packaging EAN code</b>        | 8015747221306        |
| <b>Sub-packaging length</b>      | 35,00 mm             |
| <b>Sub-packaging height</b>      | 40,00 mm             |
| <b>Sub-packaging width</b>       | 155,00 mm            |
| <b>Sub-packaging weight</b>      | 0,12 kg              |
| <b>Sub-packaging volume</b>      | 0,22 dm <sup>3</sup> |
| <b>Sub-packaging description</b> | Carton tray          |
| <b>Sub-packaging quantity</b>    | 10 Pcs               |
| <b>Sub-packaging EAN barcode</b> | 8015747129251        |

Part number

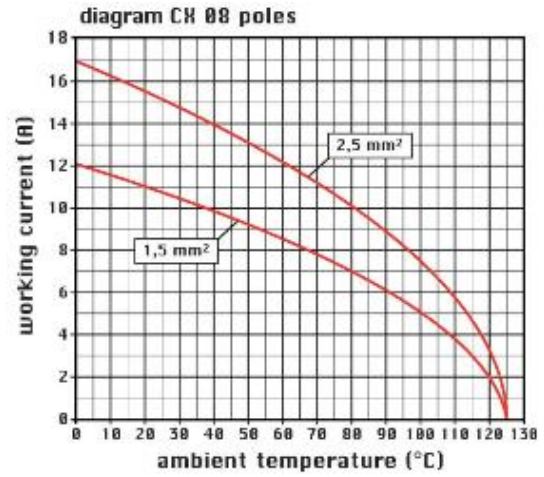
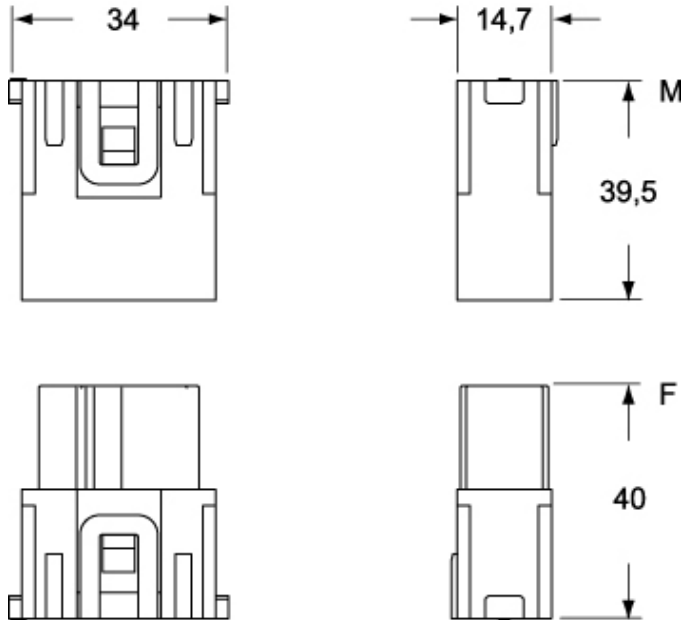
# CX 08 CM



Catalogue drawings

Catalogue drawings

## CX 08 CM



## CX 08 CF

