

Part number

CX 03 4F



Female modular insert, Mixo series, crimp connection, 3 poles, 1 module, 40 A 400/690 V 6 kV 3

Product description		Material properties	
Product type	Modular insert	Main material	Polycarbonate
Series	Mixo	Colour	RAL 7032 grey
Connection type	Crimp connection	RoHs conformity	Compliant
Gender	Female	China RoHs - EFUP	E
N. of poles	3 poles	REACH SVHC substances	No
Size	1 module	Approvals / Standards	
Specification	Standard & HNM (High Number of Matings)	Reference standard	EN 61984:2009-06
Technical data		Certifications	CSA, CQC, DNV, BV, EAC
Current	40 A	UL	ECBT2
Voltage	400 - 690 V	cUL	ECBT8
Rated impulse withstand voltage	6 kV	General ordering information	
Pollution degree	3	EAN13 code	8015747041706
Rated voltage according to UL/CSA	600 V	eCl@ss 8.1	27440205
IP degree of protection	IP20 without enclosure, IP65/IP66/IP68/IP69 with enclosure	ETIM 7.0	EC000438
Further technical details		Packaging Information	
Characteristics according to EN 61984	40A 400/690V 6kV 3	Packaging length	180,00 mm
Insulation resistance	≥ 10 GΩ	Packaging height	120,00 mm
Contact resistance	≤ 0,3 mΩ	Packaging width	155,00 mm
Weight	11,50 g	Packaging weight	0,90 kg
Operating temperature range (min, max)	-40 °C ... +125 °C	Packaging volume	3,35 dm ³
UL 94 flammability rating	V-0	Packaging description	Carton box
		Packaging quantity	60 Pcs
		Packaging EAN code	8015747221177
		Sub-packaging length	35,00 mm
		Sub-packaging height	40,00 mm
		Sub-packaging width	155,00 mm
		Sub-packaging weight	0,15 kg
		Sub-packaging volume	0,22 dm ³
		Sub-packaging description	Carton tray
		Sub-packaging quantity	10 Pcs
		Sub-packaging EAN barcode	8015747041713

Part number

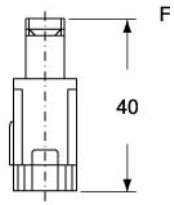
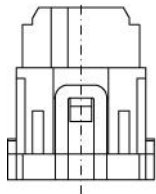
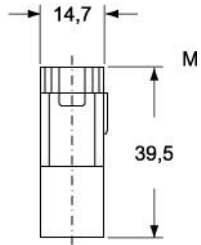
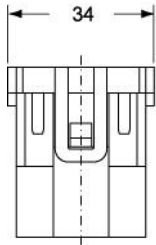
CX 03 4F



Catalogue drawings

Catalogue drawings

CX 03 4M



CX 03 4F

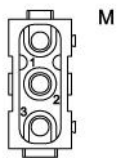
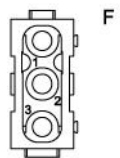


diagram CX 03 poles

