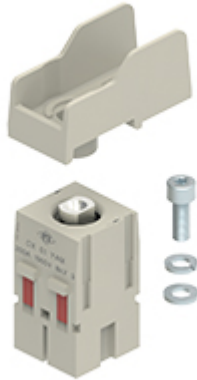


Part number

CX 01 YAM



Male modular insert, Mixo series, screw terminal connections - 90° angled for cable lug, 1 pole, 2 modules, 200 A 1000 V 8 kV 3

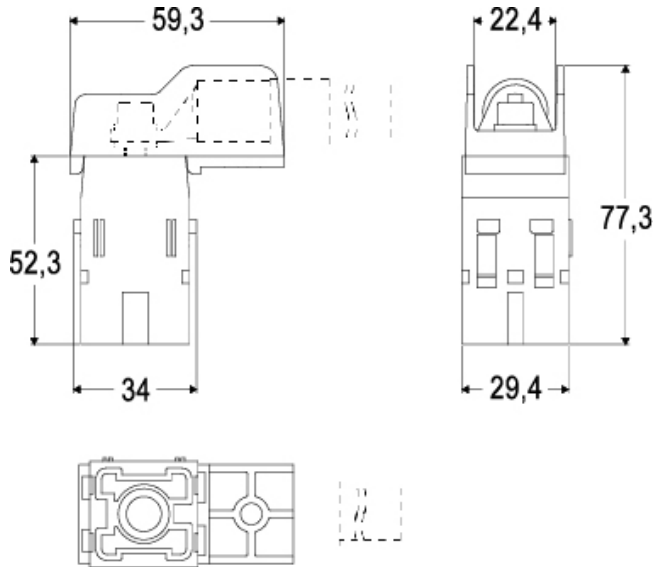
Product description		Material properties	
Product type	Modular insert	Main material	Polycarbonate
Series	Mixo	Other materials	Contacts: copper alloy
Connection type	Screw terminal connection	Colour	RAL 7032 grey
Gender	Male	RoHS conformity	Compliant with exemption 6(c): copper alloy containing up to 4% lead by weight
N. of poles	1 pole	China RoHS - EFUP	50
Size	2 modules	REACH SVHC substances	Yes Lead
Specification	Angled MIXO Module	Approvals / Standards	
Technical data		Certifications	DNV
Current	200 A	General ordering information	
Voltage	1000 V	EAN13 code	8015747284400
Rated impulse withstand voltage	8 kV	eCl@ss 8.1	27440205
Pollution degree	3	ETIM 7.0	EC000438
Rated voltage according to UL/CSA	600 V	Packaging Information	
Wire cross-section	10,00 mm ² - 70,00 mm ²	Packaging length	155,00 mm
Contact type	Turned silver plated	Packaging height	115,00 mm
IP degree of protection	IP20 without enclosure, IP65/IP66/IP68/IP69 with enclosure	Packaging width	130,00 mm
Further technical details		Packaging weight	0,58 kg
Insulation resistance	≥ 10 GΩ	Packaging volume	2,32 dm ³
Contact resistance	≤ 3 mΩ	Packaging description	Carton box
Weight	84,50 g	Packaging quantity	5 Pcs
Operating temperature range (min, max)	-40 °C ... +125 °C	Packaging EAN code	8015747291972
UL 94 flammability rating	V-0	Sub-packaging weight	0,12 kg
		Sub-packaging description	Plastic bag
		Sub-packaging quantity	1 Pcs
		Sub-packaging EAN barcode	8015747284424

Part number

CX 01 YAM



Catalogue drawings



Derating curves

CX 01 YA, 1 pole connector inserts (MIXO 200A)
Maximum current load derating diagram

