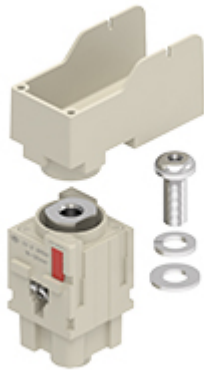


Part number

CX 01 30PEAF



Female modular insert, Mixo series, screw terminal connections - 90° angled for cable lug, 1 pole, 2 modules, 300 A, PE module for earth termination

Product description	
Product type	Modular insert
Series	Mixo
Connection type	Screw terminal connection
Gender	Female
N. of poles	1 PE pole
Size	2 modules
Specification	For wire cross-section 16-120 mm ² PE angled MIXO Module
Technical data	
Current	300 A
Rated impulse withstand voltage	8 kV
Pollution degree	3
Contact type	Turned silver plated
IP degree of protection	IP20 without enclosure, IP65/IP66/IP68/IP69 with enclosure
Further technical details	
Mating cycles	≥ 500
Contact resistance	≤ 3 mΩ
Weight	115,00 g
Operating temperature range (min, max)	-40 °C ... +125 °C
UL 94 flammability rating	V-0

Material properties	
Main material	Polycarbonate
Other materials	Contacts: copper alloy
Colour	RAL 7032 grey
RoHs conformity	Compliant with exemption 6(c): copper alloy containing up to 4% lead by weight
China RoHs - EFUP	50
REACH SVHC substances	Yes Lead
General ordering information	
EAN13 code	8015747289900
eCl@ss 8.1	27440205
ETIM 7.0	EC000438
Packaging Information	
Packaging weight	0,63 kg
Packaging volume	1,24 dm ³
Packaging description	Carton box
Packaging quantity	5 Pcs
Packaging EAN code	8015747290128
Sub-packaging length	145,00 mm
Sub-packaging height	89,00 mm
Sub-packaging width	120,00 mm
Sub-packaging weight	0,13 kg
Sub-packaging volume	1,55 dm ³
Sub-packaging description	Plastic bag
Sub-packaging quantity	1 Pcs
Sub-packaging EAN barcode	8015747290135

Part number

CX 01 30PEAF



Catalogue drawings

