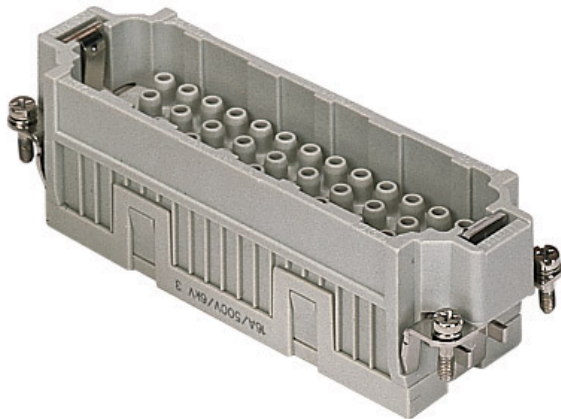



Part number

CQEM 46 N



Male insert, CQE series, crimp connection, 46 poles + PE (47-92), 16 A 500 V 6 kV 3, size "104.62"

| Product description | |
|--|--|
| Product type | Insert |
| Series | CQE |
| Connection type | Crimp connection |
| Gender | Male |
| N. of poles | 92 poles +  |
| Size | Size 104.62 |
| Technical data | |
| Current | 16 A |
| Voltage | 500 V |
| Rated impulse withstand voltage | 6 kV |
| Pollution degree | 3 |
| Rated voltage according to UL/CSA | 600 V |
| Pole numbering system | 47-92 |
| IP degree of protection | IP20 without enclosure, IP65/IP66 with enclosure |
| Further technical details | |
| Characteristics according to EN 61984 | 16A 500V 6kV 3; 16A 830V 8kV 2 |
| Mating cycles | ≥ 500 |
| Insulation resistance | ≥ 10 GΩ |
| Contact resistance | ≤ 1 mΩ |
| Weight | 85,00 g |
| Operating temperature range (min, max) | -40 °C ... +125 °C |
| UL 94 flammability rating | V-0 |

| Material properties | |
|------------------------------|------------------------|
| Main material | Polycarbonate (PC) |
| Colour | RAL 7032 grey |
| RoHs conformity | Compliant |
| China RoHs - EFUP | E |
| REACH SVHC substances | No |
| Approvals / Standards | |
| Reference standard | EN 61984:2009-06 |
| Certifications | CSA, CQC, DNV, BV, EAC |
| UL | ECBT2 |
| cUL | ECBT8 |
| General ordering information | |
| EAN13 code | 8015747037266 |
| eCl@ss 8.1 | 27440205 |
| ETIM 7.0 | EC000438 |
| Packaging Information | |
| Sub-packaging length | 113,00 mm |
| Sub-packaging height | 36,00 mm |
| Sub-packaging width | 180,00 mm |
| Sub-packaging weight | 0,43 kg |
| Sub-packaging volume | 0,73 dm ³ |
| Sub-packaging description | Carton tray |
| Sub-packaging quantity | 5 Pcs |
| Sub-packaging EAN barcode | 8015747037273 |

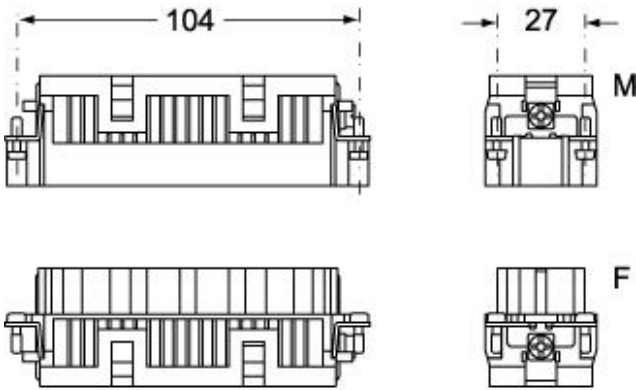
Part number

CQEM 46 N

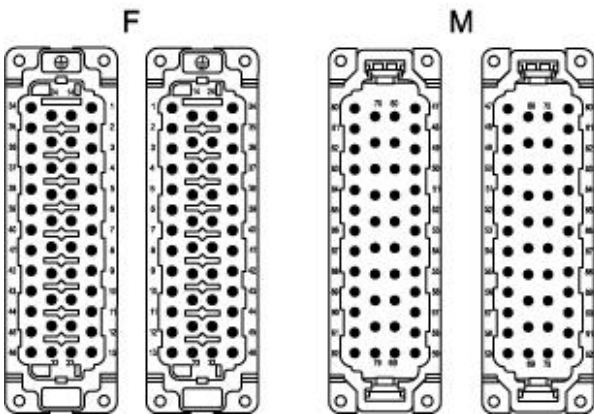


Catalogue drawings

CQEM 46



CQEF 46



Catalogue drawings

diagram CQE 46 and 92 poles

