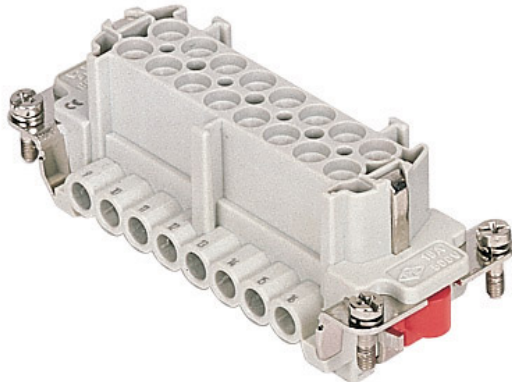


Part number

CMEF 06 TX



Female insert, CME series, screw terminal connection, 6 + 2 poles + PE, 16 A 830 V 8 kV 3 / 16 A 500 V 6 kV 3, size "77.27", without plate

Product description

| | |
|------------------------|--|
| Product type | Insert |
| Series | CME |
| Connection type | Screw terminal connection |
| Gender | Female |
| N. of poles | 6 poles + \perp |
| Auxiliary poles | 2 poles |
| Size | Size 77.27 |
| Specification | Without plate, for prepared conductors |

Technical data

| | |
|--|--|
| Current | 16 A |
| Voltage | 830 V |
| Rated impulse withstand voltage | 8 kV |
| Pollution degree | 3 |
| Rated voltage according to UL/CSA | 600 V |
| Wire cross-section | 0,25 mm ² - 2,50 mm ² |
| AWG size | 24 - 14 |
| Contact type | Turned silver plated |
| IP degree of protection | IP20 without enclosure, IP65/IP66 with enclosure |

Further technical details

| | |
|---|---|
| Characteristics according to EN 61984 | 16A 830V 8kV 3 (aux: 16A 500V 6kV 3); 16A 1000V 8kV 2 (power contacts only) |
| Mating cycles | ≥ 500 |
| Insulation resistance | ≥ 10 GΩ |
| Contact resistance | ≤ 1 mΩ |
| Weight | 75,00 g |
| Operating temperature range (min, max) | -40 °C ... +125 °C |
| UL 94 flammability rating | V-0 |
| Torque for main contact | M3: 0,5 Nm; 4,4 lb.in (Ph0 or 0,8 x 4 mm) |

Material properties

| | |
|------------------------------|--|
| Main material | Polycarbonate (PC) |
| Other materials | Contacts: copper alloy |
| Colour | RAL 7032 grey |
| RoHs conformity | Compliant with exemption 6(c): copper alloy containing up to 4% lead by weight |
| China RoHs - EFUP | 50 |
| REACH SVHC substances | Yes Lead |
| SCIP number | 1a9c93ff-0445-4a16-81e3-1609ac5274d6 |

Approvals / Standards

| | |
|---------------------------|------------------------|
| Reference standard | EN 61984:2009-06 |
| Certifications | CSA, CQC, DNV, BV, EAC |
| UL | ECBT2 |
| cUL | ECBT8 |

General ordering information

| | |
|-------------------|---------------|
| EAN13 code | 8015747148795 |
| ETIM 7.0 | EC000438 |

Packaging Information

| | |
|----------------------------------|----------------------|
| Packaging length | 230,00 mm |
| Packaging height | 110,00 mm |
| Packaging width | 180,00 mm |
| Packaging weight | 2,39 kg |
| Packaging volume | 4,55 dm ³ |
| Packaging description | Carton box |
| Packaging quantity | 30 Pcs |
| Packaging EAN code | 8015747053914 |
| Sub-packaging length | 87,00 mm |
| Sub-packaging height | 36,00 mm |
| Sub-packaging width | 180,00 mm |
| Sub-packaging weight | 0,40 kg |
| Sub-packaging volume | 0,56 dm ³ |
| Sub-packaging description | Carton tray |
| Sub-packaging quantity | 5 Pcs |
| Sub-packaging EAN barcode | 8015747189712 |

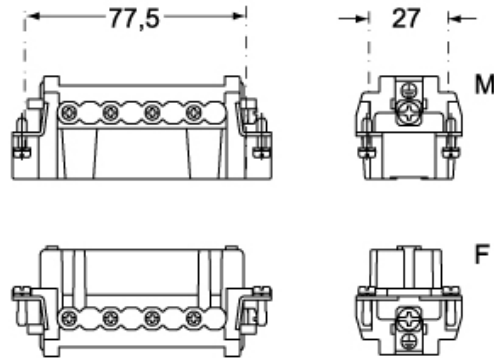
Part number

CMEF 06 TX

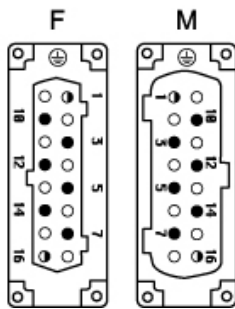


Catalogue drawings

CMEM 06



CMEF 06



Catalogue drawings

