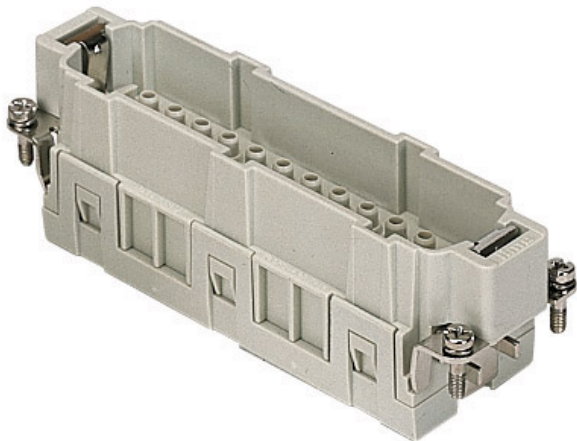



Part number

CMCEM 10



Male insert, CMCE series, crimp connection,
10 + 2 poles + PE, 16 A 830 V 8 kV 3 / 16 A
500 V 6 kV 3, size "104.27"

Product description

| | |
|------------------------|--|
| Product type | Insert |
| Series | CMCE |
| Connection type | Crimp connection |
| Gender | Male |
| N. of poles | 10 poles +  |
| Auxiliary poles | 2 poles |
| Size | Size 104.27 |

Technical data

| | |
|--|--|
| Current | 16 A |
| Voltage | 830 V |
| Rated impulse withstand voltage | 8 kV |
| Pollution degree | 3 |
| Rated voltage according to UL/CSA | 600 V |
| IP degree of protection | IP20 without enclosure, IP65/IP66/IP68/IP69 with enclosure |

Further technical details

| | |
|---|---|
| Characteristics according to EN 61984 | 16A 830V 8kV 3 (aux: 16A 500V 6kV 3); 16A 1000V 8kV 2 (power contacts only) |
| Mating cycles | ≥ 500 |
| Insulation resistance | ≥ 10 GΩ |
| Contact resistance | ≤ 1 mΩ |
| Weight | 82,00 g |
| Operating temperature range (min, max) | -40 °C ... +125 °C |
| UL 94 flammability rating | V-0 |

Material properties

| | |
|------------------------------|--------------------|
| Main material | Polycarbonate (PC) |
| Colour | RAL 7032 grey |
| RoHs conformity | Compliant |
| China RoHs - EFUP | E |
| REACH SVHC substances | No |

Approvals / Standards

| | |
|---------------------------|------------------------|
| Reference standard | EN 61984:2009-06 |
| Certifications | CSA, CQC, DNV, BV, EAC |
| UL | ECBT2 |

General ordering information

| | |
|-------------------|---------------|
| EAN13 code | 8015747133425 |
| ETIM 7.0 | EC000438 |

Packaging Information

| | |
|----------------------------------|----------------------|
| Packaging length | 270,00 mm |
| Packaging height | 75,00 mm |
| Packaging width | 180,00 mm |
| Packaging weight | 2,72 kg |
| Packaging volume | 3,65 dm ³ |
| Packaging description | Carton box |
| Packaging quantity | 30 Pcs |
| Packaging EAN code | 8015747136068 |
| Sub-packaging length | 113,00 mm |
| Sub-packaging height | 36,00 mm |
| Sub-packaging width | 180,00 mm |
| Sub-packaging weight | 0,45 kg |
| Sub-packaging volume | 0,73 dm ³ |
| Sub-packaging description | Carton tray |
| Sub-packaging quantity | 5 Pcs |
| Sub-packaging EAN barcode | 8015747136075 |

Part number

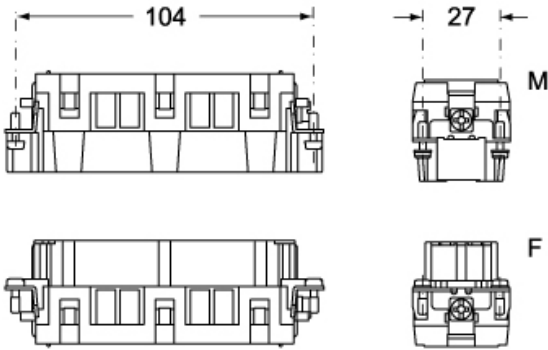
CMCEM 10



Catalogue drawings

Catalogue drawings

CMCEM 10



CMCEF 10

