

Part number

CK 03 IAP



Angled Bulkhead mounting housing, CK series, with 1 lever, Pg11 cable entry, size "21.21", with integrated insulating semi-cable gland

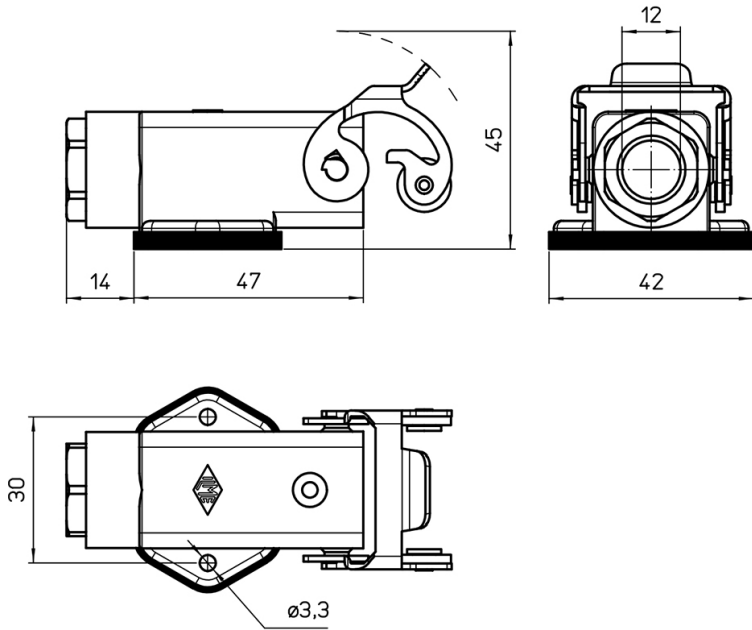
| Product description | | Material properties | |
|---|---|-------------------------------------|--------------------------------------|
| Product type | Angled bulkhead mounting housing | Other materials | Lever: Polyamide (PA) Gasket: TPE |
| Series | CK | Colour | RAL 7035 grey |
| Closing type | With 1 lever | RoHs conformity | Compliant |
| Size | Size "21.21" | China RoHs - EFUP | E |
| Cable entry | With cable entry Pg11 | REACH SVHC substances | No |
| Specification | With integrated insulating semi-cable gland | Approvals / Standards | |
| Technical data | | UL | ECBT2 |
| IP degree of protection | IP44 - IP66 / IP67 / IP69 with CKR 65 (D) | cUL | ECBT8 |
| Further technical details | | General ordering information | |
| Weight | 19,50 g | EAN13 code | 8015747026338 |
| Operating temperature range (min, max) | -40°C...+125°C | Packaging Information | |
| | | Packaging length | 360,00 mm |
| | | Packaging height | 165,00 mm |
| | | Packaging width | 315,00 mm |
| | | Packaging weight | 3,07 kg |
| | | Packaging volume | 18,71 dm ³ |
| | | Packaging description | Carton box |
| | | Packaging quantity | 100 Pcs |
| | | Packaging EAN code | 8015747026345 |
| | | Sub-packaging weight | 0,31 kg |
| | | Sub-packaging description | Carton box |
| | | Sub-packaging quantity | 10 Pcs |
| | | Sub-packaging EAN barcode | 8015747026352 |

Part number

CK 03 IAP



Catalogue drawings



Catalogue drawings

Panel cut-out

