


Part number

# SQV 1645



Interlocked switched socket-outlet, SQV series, 3 poles + N + PE, 4 h (yellow), 16 A, 57/100 ÷ 75/130 V, sectionable fuse carrier 10 x 38 mm

#### Product description

|                       |   |
|-----------------------|---|
| <b>Product type</b>   | Interlocked switched socket-outlet  |
| <b>Series</b>         | SQV   |
| <b>N. of poles</b>    | 3 poles + N +  |
| <b>Clock position</b> | 4   |
| <b>Size</b>           | Socket fixing centre distance 88 x 230 mm   |
| <b>Specification</b>  | Sectionable fuse carrier 10 x 38 mm   |

#### Technical data

|                                |                   |
|--------------------------------|-------------------|
| <b>Current</b>                 | 16 A              |
| <b>Voltage</b>                 | 57/100 ÷ 75/130 V |
| <b>IP degree of protection</b> | IP44              |

#### Further technical details

|  |                 |
|--|-----------------|
| <b>Weight</b>                                  | 572,00 g        |
| <b>Operating temperature range (min, max)</b>  | -25°C ... +40°C |
| <b>IK rating (impact degree of protection)</b> | IK08            |

#### Material properties

|                              |  |
|------------------------------|--|
| <b>Colour</b>                | RAL 7035 grey, RAL 1021 yellow   |
| <b>RoHs conformity</b>       | Compliant with exemption 6(c): copper alloy containing up to 4% lead by weight |
| <b>China RoHs - EFUP</b>     | 50   |
| <b>REACH SVHC substances</b> | Yes<br>Lead  |
| <b>SCIP number</b>           | F6799547-ab84-42f2-938f-233ba663766d   |

#### Approvals / Standards

|                           |                     |
|---------------------------|---------------------|
| <b>Reference standard</b> | EN 60309-1, -2 e -4 |
|---------------------------|---------------------|

#### General ordering information

|                   |               |
|-------------------|---------------|
| <b>EAN13 code</b> | 8015747087513 |
|-------------------|---------------|

#### Packaging Information

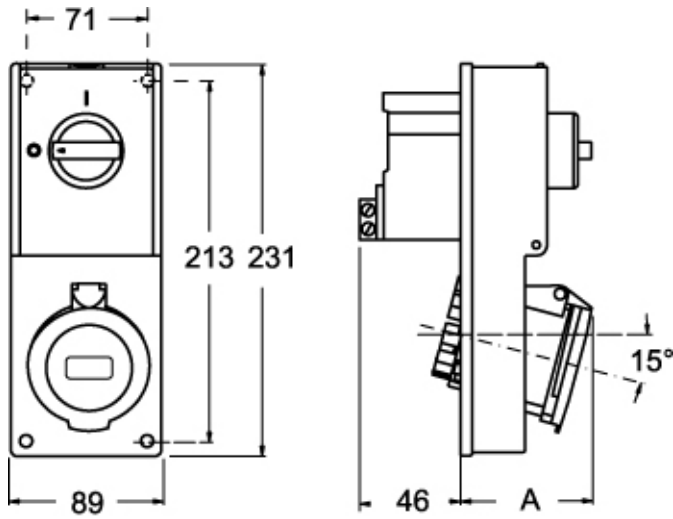
|                                  |                   |
|----------------------------------|-------------------|
| <b>Sub-packaging weight</b>      | 0,57 kg           |
| <b>Sub-packaging description</b> | Plastic packaging |
| <b>Sub-packaging quantity</b>    | 1 Pcs             |
| <b>Sub-packaging EAN barcode</b> | 8015747087520     |

Part number

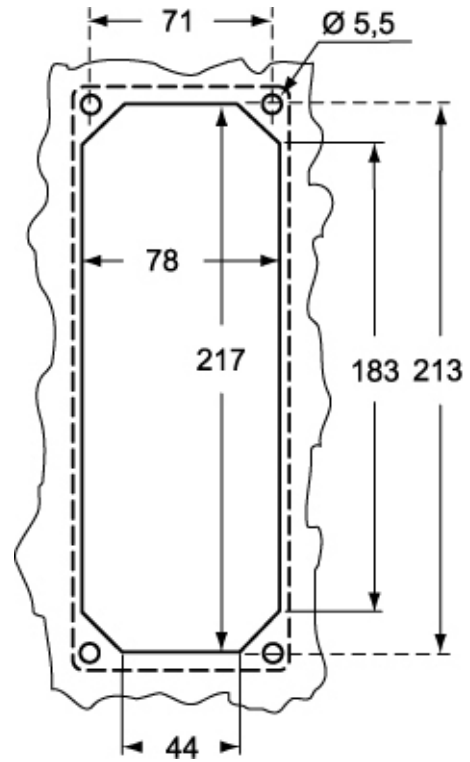
# SQV 1645



Catalogue drawings



Catalogue drawings



| SQV |        | A  |
|-----|--------|----|
| 16A | 2P+⊕   | 64 |
|     | 3P+⊕   | 65 |
|     | 3P+N+⊕ | 67 |