


Part number

SQE 3293.5



Interlocked switched socket-outlet, SQE series, 2 poles + PE, 9 h (red), 32 A, 380 ÷ 415 V, without fuse-carrier

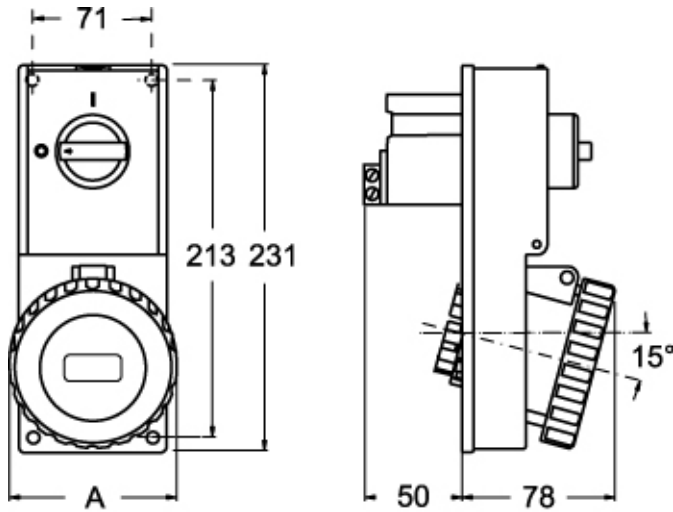
Product description		Material properties	
Product type	Interlocked switched socket-outlet	Colour	RAL 7035 grey, RAL 3000 red
Series	SQE		Compliant with exemption 6(c): copper alloy containing up to 4% lead by weight
N. of poles	2 poles + 	RoHs conformity	6(c): copper alloy containing up to 4% lead by weight
Clock position	9	China RoHs - EFUP	50
Size	Socket fixing centre distance 88 x 230 mm	REACH SVHC substances	Yes Lead
Specification	Without fuse-carrier	SCIP number	Ce861c8d-b979-403b-96d9-80aef6dc281d
Technical data		Approvals / Standards	
Current	32 A	Reference standard	EN 60309-1, -2 e -4
Voltage	380 ÷ 415 V	General ordering information	
IP degree of protection	IP55	EAN13 code	8015747087056
Further technical details		Packaging Information	
Weight	608,00 g	Sub-packaging length	116,00 mm
Operating temperature range (min, max)	-25°C ... +40°C	Sub-packaging height	103,00 mm
IK rating (impact degree of protection)	IK08	Sub-packaging width	230,00 mm
		Sub-packaging weight	0,61 kg
		Sub-packaging volume	2,75 dm ³
		Sub-packaging description	Carton box
		Sub-packaging quantity	1 Pcs
		Sub-packaging EAN barcode	8015747087063

Part number

SQE 3293.5



Catalogue drawings



Catalogue drawings



SQE.5		A
32A	2P+⊕	92
	3P+⊕	92
	3P+N+⊕	100