


Part number

SQE 1675



Interlocked switched socket-outlet, SQE series, 3 poles + N + PE, 7 h (black), 16 A, 277/480 ÷ 288/500 V, without fuse-carrier

Product description	
Product type	Interlocked switched socket-outlet
Series	SQE
N. of poles	3 poles + N + 
Clock position	7
Specification	Without fuse-carrier
Technical data	
Current	16 A
Voltage	277/480 ÷ 288/500 V
IP degree of protection	IP44
Further technical details	
Weight	540,00 g
Operating temperature range (min, max)	-25°C ... +40°C
IK rating (impact degree of protection)	IK08

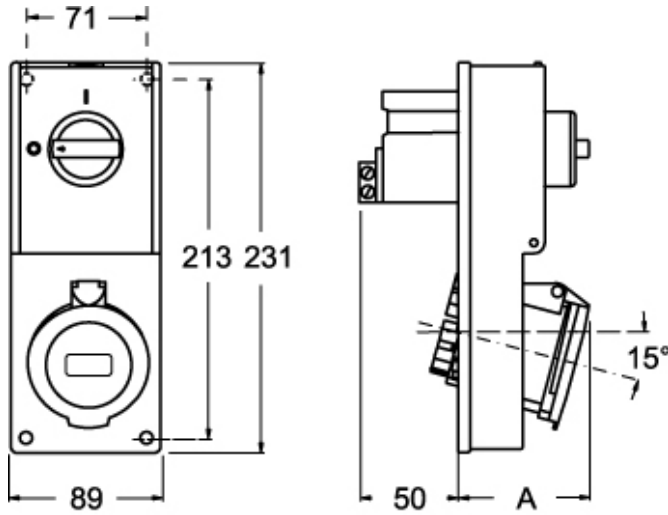
Material properties	
Colour	RAL 7035 grey, RAL 9005 black
Approvals / Standards	
Reference standard	EN 60309-1, -2 e -4
General ordering information	
EAN13 code	8015747086011
Packaging Information	
Sub-packaging weight	0,54 kg
Sub-packaging description	Carton box
Sub-packaging quantity	1 Pcs
Sub-packaging EAN barcode	8015747109307

Part number

SQE 1675



Catalogue drawings



Catalogue drawings



SQE		A
16A	2P+⊕	64
	3P+⊕	65
	3P+N+⊕	67