


Part number

SQE 1635



Interlocked switched socket-outlet, SQE series, 3 poles + N + PE, 3 h (red), 16 A, 220/380 V, without fuse-carrier

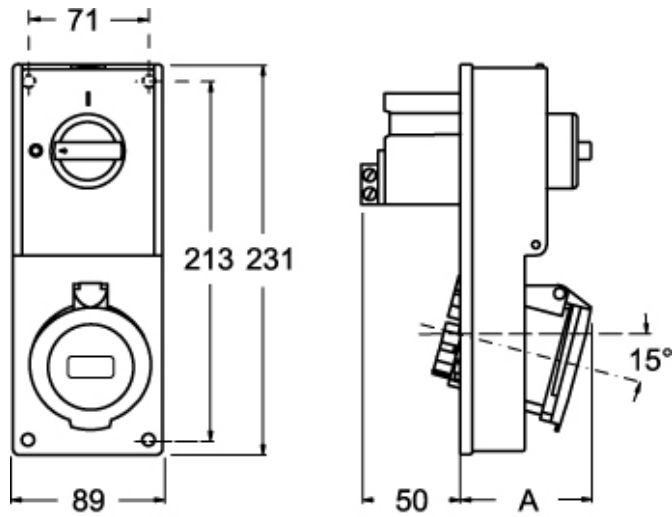
Product description		Material properties	
Product type	Interlocked switched socket-outlet	Colour	RAL 7035 grey, RAL 3000 red
Series	SQE		Compliant with exemption 6(c): copper alloy containing up to 4% lead by weight
N. of poles	3 poles + N + 	RoHs conformity	50
Clock position	3	China RoHs - EFUP	50
Specification	Without fuse-carrier	REACH SVHC substances	Yes Lead
Technical data		SCIP number	Ce861c8d-b979-403b-96d9-80aef6dc281d
Current	16 A	Approvals / Standards	
Voltage	220/380V (50Hz) 250/440V (60Hz)	Reference standard	EN 60309-1, -2 e -4
IP degree of protection	IP44	General ordering information	
Further technical details		EAN13 code	8015747085342
Weight	540,00 g	Packaging Information	
Operating temperature range (min, max)	-25°C ... +40°C	Packaging length	290,00 mm
IK rating (impact degree of protection)	IK08	Packaging height	250,00 mm
		Packaging width	360,00 mm
		Packaging weight	4,86 kg
		Packaging volume	26,10 dm ³
		Packaging description	Carton box
		Packaging quantity	9 Pcs
		Packaging EAN code	8015747085359
		Sub-packaging weight	0,54 kg
		Sub-packaging description	Plastic packaging
		Sub-packaging quantity	1 Pcs
		Sub-packaging EAN barcode	8015747085366

Part number

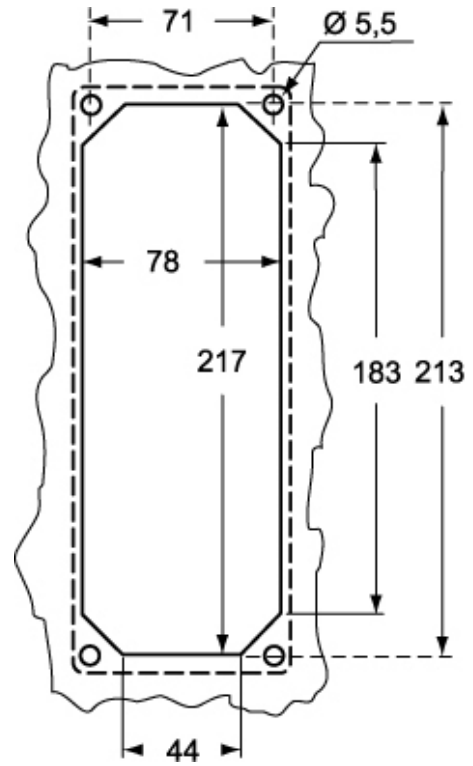
SQE 1635



Catalogue drawings



Catalogue drawings



SQE		A
16A	2P+⊕	64
	3P+⊕	65
	3P+N+⊕	67