


Part number

SQE 1623



Interlocked switched socket-outlet, SQE series, 2 poles + PE, 2 h (green), 16 A, > 50 V, without fuse-carrier

Product description

| | |
|-----------------------|---|
| Product type | Interlocked switched socket-outlet |
| Series | SQE |
| N. of poles | 2 poles +  |
| Clock position | 2 |
| Specification | Without fuse-carrier |

Technical data

| | |
|--------------------------------|--------|
| Current | 16 A |
| Voltage | > 50 V |
| IP degree of protection | IP44 |

Further technical details

| | |
|--|-----------------|
| Weight | 468,00 g |
| Operating temperature range (min, max) | -25°C ... +40°C |
| IK rating (impact degree of protection) | IK08 |

Material properties

| | |
|------------------------------|--|
| Colour | RAL 7035 grey, RAL 6017 green |
| RoHs conformity | Compliant with exemption 6(c): copper alloy containing up to 4% lead by weight |
| China RoHs - EFUP | 50 |
| REACH SVHC substances | Yes Lead |
| SCIP number | Ce861c8d-b979-403b-96d9-80aef6dc281d |

Approvals / Standards

| | |
|---------------------------|---------------------|
| Reference standard | EN 60309-1, -2 e -4 |
|---------------------------|---------------------|

General ordering information

| | |
|-------------------|---------------|
| EAN13 code | 8015747085328 |
|-------------------|---------------|

Packaging Information

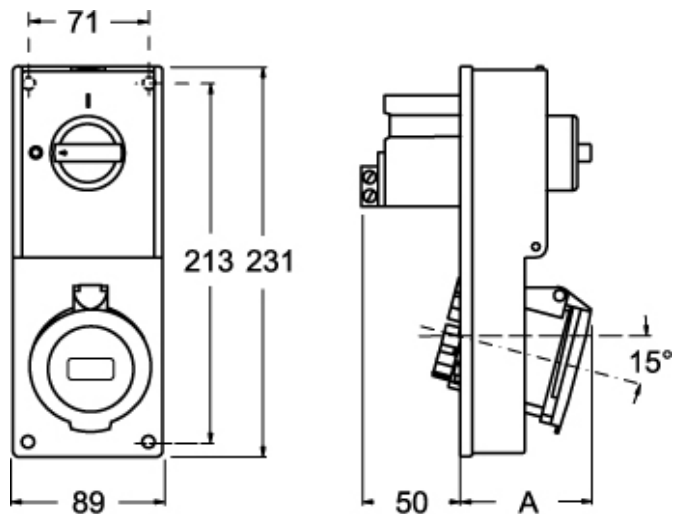
| | |
|----------------------------------|----------------------|
| Sub-packaging length | 116,00 mm |
| Sub-packaging height | 103,00 mm |
| Sub-packaging width | 230,00 mm |
| Sub-packaging weight | 0,47 kg |
| Sub-packaging volume | 2,75 dm ³ |
| Sub-packaging description | Carton box |
| Sub-packaging quantity | 1 Pcs |
| Sub-packaging EAN barcode | 8015747085335 |

Part number

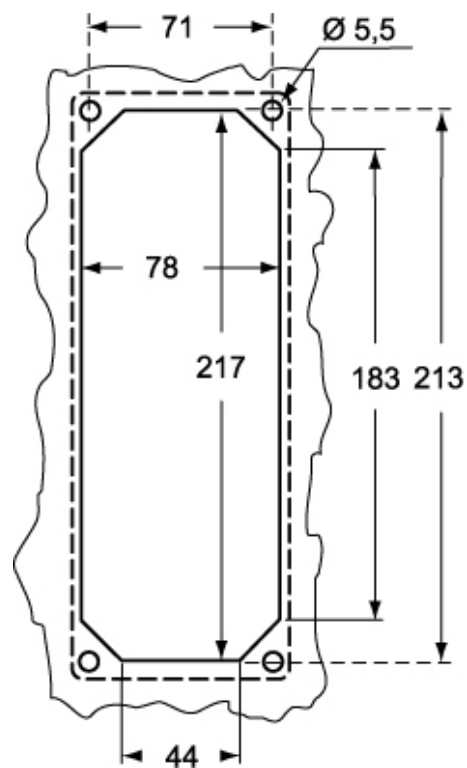
SQE 1623



Catalogue drawings



Catalogue drawings



| SQE | | A |
|-----|--------|----|
| 16A | 2P+⊕ | 64 |
| | 3P+⊕ | 65 |
| | 3P+N+⊕ | 67 |