

Part number

# SIP 3265 SM



Wall-mounting plug, PLUSO series, 3 poles + N + PE, 6 h (red), 32 A, 200/346 ÷ 240/415 V, with phase inverter

#### Product description

<b>Product type</b>	Plug Wall-mounting
<b>Series</b>	SIP...SM, PLUSO
<b>Connection type</b>	Screw terminal connection
<b>N. of poles</b>	3 poles + N +
<b>Clock position</b>	6
<b>Specification</b>	With phase inverter

#### Technical data

<b>Current</b>	32 A
<b>Voltage</b>	200/346 ÷ 240/415 V
<b>IP degree of protection</b>	IP44

#### Further technical details

<b>Weight</b>	285,50 g
<b>Operating temperature range (min, max)</b>	-25°C ... +40°C

#### Material properties

<b>Colour</b>	RAL 7035 grey, RAL 3000 red
<b>RoHs conformity</b>	Compliant with exemption 6(c): copper alloy containing up to 4% lead by weight
<b>China RoHs - EFUP</b>	50
<b>REACH SVHC substances</b>	Yes Lead
<b>SCIP number</b>	Ca7de37f-add8-4b77-9861-279c94903ade

#### Approvals / Standards

<b>Reference standard</b>	EN 60309-1 and -2
---------------------------	-------------------

#### General ordering information

<b>EAN13 code</b>	8015747083935
-------------------	---------------

#### Packaging Information

<b>Packaging length</b>	330,00 mm
<b>Packaging height</b>	175,00 mm
<b>Packaging width</b>	295,00 mm
<b>Packaging weight</b>	3,20 kg
<b>Packaging volume</b>	17,04 dm <sup>3</sup>
<b>Packaging description</b>	Carton box
<b>Packaging quantity</b>	10 Pcs
<b>Packaging EAN code</b>	8015747083942

Part number

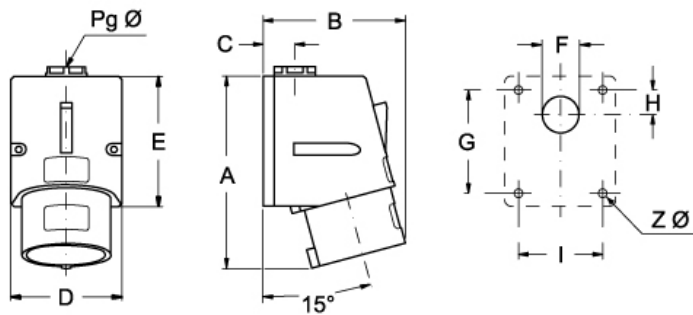
# SIP 3265 SM



Catalogue drawings

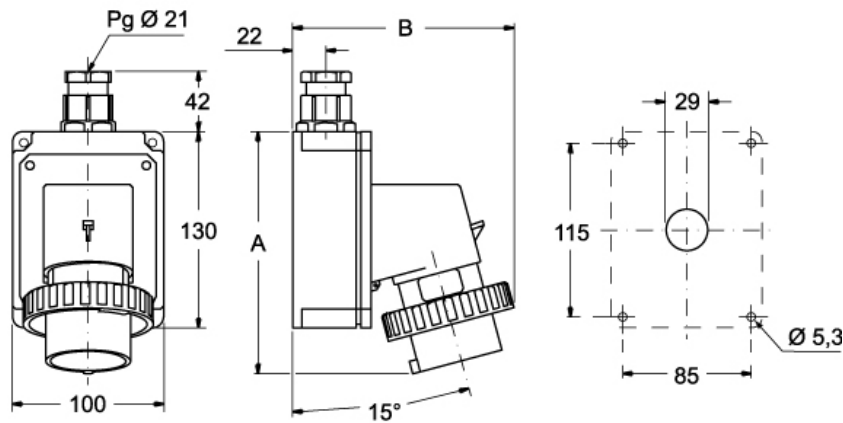
Catalogue drawings

SIP ... SM



	A	B	C	D	E	F	G	H	I	Z Ø	Pg Ø
<b>16A</b>	121	90	20	70	82	23	65	16	53	4,3	16
<b>32A</b>	147	95	24	86	104	29	79	17	61	6,3	21

SIPW ... SM



	A	B
<b>16A</b>	164	145
<b>32A</b>	178	160