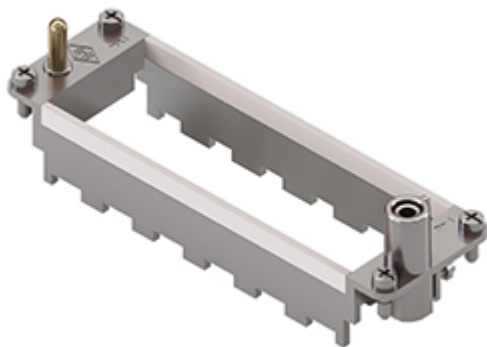


Part number

# RX 06 TM



Frame for Mixo inserts, 6 modules, for 6 modular inserts and enclosures size "104.27", frame for hoods, HNM - High Number of Matings version

| Product description       |   |
|---------------------------|---|
| <b>Product type</b>       | Frame for Mixo inserts  |
| <b>Size</b>               | 6 modules   |
| <b>Specification</b>      | For 6 modular inserts and enclosures size 104.27<br>Frame for hoods, HNM - High Number of Matings version |
| Further technical details |   |
| <b>Weight</b>             | 58,00 g   |

| Material properties              |  |
|----------------------------------|--|
| <b>RoHs conformity</b>           | Compliant with exemption 6(c): copper alloy containing up to 4% lead by weight |
| <b>China RoHs - EFUP</b>         | 50   |
| <b>REACH SVHC substances</b>     | Yes<br>Lead  |
| <b>SCIP number</b>               | C0556c52-3b1b-4ffb-87d5-58c9db853c44   |
| Approvals / Standards            |  |
| <b>Certifications</b>            | DNV  |
| <b>UL</b>                        | ECBT2  |
| <b>cUL</b>                       | ECBT8  |
| General ordering information     |  |
| <b>EAN13 code</b>                | 8015747239622  |
| <b>eCl@ss 8.1</b>                | 27440210   |
| <b>ETIM 7.0</b>                  | EC002310   |
| Packaging Information            |  |
| <b>Packaging length</b>          | 270,00 mm  |
| <b>Packaging height</b>          | 75,00 mm   |
| <b>Packaging width</b>           | 180,00 mm  |
| <b>Packaging weight</b>          | 2,30 kg  |
| <b>Packaging volume</b>          | 3,65 dm <sup>3</sup>   |
| <b>Packaging description</b>     | Carton box   |
| <b>Packaging quantity</b>        | 30 Pcs   |
| <b>Packaging EAN code</b>        | 8015747239691  |
| <b>Sub-packaging length</b>      | 113,00 mm  |
| <b>Sub-packaging height</b>      | 36,00 mm   |
| <b>Sub-packaging width</b>       | 180,00 mm  |
| <b>Sub-packaging weight</b>      | 0,38 kg  |
| <b>Sub-packaging volume</b>      | 0,73 dm <sup>3</sup>   |
| <b>Sub-packaging description</b> | Carton tray  |
| <b>Sub-packaging quantity</b>    | 5 Pcs  |
| <b>Sub-packaging EAN barcode</b> | 8015747239707  |

Part number

# RX 06 TM



## Catalogue drawings



| part No.             | A (mm) | for housings size |
|----------------------|--------|-------------------|
| <b>RX 02 TM / TF</b> | 44     | 44,27             |
| <b>RX 03 TM / TF</b> | 57     | 57,27             |
| <b>RX 04 TM / TF</b> | 77,5   | 77,27 and 77,62   |
| <b>RX 06 TM / TF</b> | 104    | 104,27 and 104,62 |