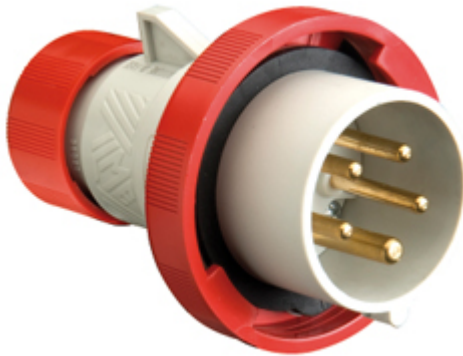



Part number

PESW 1665 SV



Mobile plug, PLUSO series, SQUICH® quick connection, 3 poles + N + PE, 6 h (red), 16 A, 380 ÷ 415 V, straight

Product description

Product type	Plug Mobile
Series	PESW...SV, PLUSO
Connection type	SQUICH® quick connection
N. of poles	3 poles + N + 
Clock position	6
Specification	Straight

Technical data

Current	16 A
Voltage	380 ÷ 415 V
IP degree of protection	IP66 / IP67

Further technical details

Weight	206,00 g
Operating temperature range (min, max)	-25°C ... +40°C

Material properties

Colour	RAL 7035 grey, RAL 3000 red Compliant with exemption
RoHs conformity	6(c): copper alloy containing up to 4% lead by weight
China RoHs - EFUP	50
REACH SVHC substances	Yes Lead
SCIP number	Ca7de37f-add8-4b77-9861-279c94903ade

Approvals / Standards

Reference standard	EN 60309-1 and -2
---------------------------	-------------------

General ordering information

EAN13 code	8015747187268
-------------------	---------------

Packaging Information

Packaging length	330,00 mm
Packaging height	170,00 mm
Packaging width	352,00 mm
Packaging weight	4,22 kg
Packaging volume	19,75 dm ³
Packaging description	Carton box
Packaging quantity	20 Pcs
Packaging EAN code	8015747187299

Part number

PESW 1665 SV



Catalogue drawings

