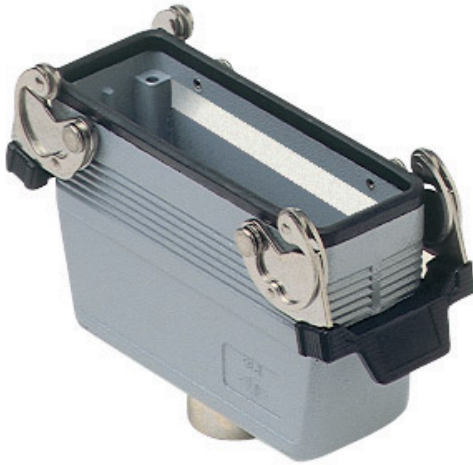


Part number

# MMAV 16 LG25



Hood, 830V series, with 1 lever, M25 top cable entry, size "104.27", high construction

## Product description

|                      |                        |
|----------------------|------------------------|
| <b>Product type</b>  | Hood                   |
| <b>Series</b>        | 830V                   |
| <b>Closing type</b>  | With 1 lever           |
| <b>Size</b>          | Size 104.27            |
| <b>Cable entry</b>   | Top cable entry<br>M25 |
| <b>Specification</b> | High construction      |

## Technical data

**IP degree of protection** IP65 / IP66 / IP69

## Further technical details

|   |                |
|---|----------------|
| <b>Weight</b>                                 | 356,00 g       |
| <b>Operating temperature range (min, max)</b> | -40°C...+125°C |

## Material properties

|                              |               |
|------------------------------|---------------|
| <b>Colour</b>                | RAL 7040 grey |
| <b>RoHs conformity</b>       | Compliant     |
| <b>China RoHs - EFUP</b>     | E             |
| <b>REACH SVHC substances</b> | No            |

## Approvals / Standards

|                       |         |
|-----------------------|---------|
| <b>Certifications</b> | DNV, BV |
| <b>UL</b>             | ECBT2   |
| <b>cUL</b>            | ECBT8   |

## General ordering information

**EAN13 code** 8015747058155

## Packaging Information

|                                  |                   |
|----------------------------------|-------------------|
| <b>Sub-packaging weight</b>      | 1,78 kg           |
| <b>Sub-packaging description</b> | Plastic packaging |
| <b>Sub-packaging quantity</b>    | 5 Pcs             |
| <b>Sub-packaging EAN barcode</b> | 8015747107792     |

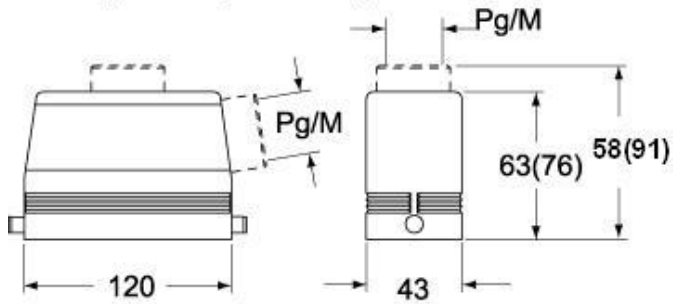
Part number

# MMAV 16 LG25



Catalogue drawings

**CMO L (CMAO L) - MMO L [MMAO L]  
CMV L [CMAV L] - MMV L (MMAV L)**



**CMV LG (CMAV LG) - MMV LG (MMAV LG)  
[MMFV LG]**

