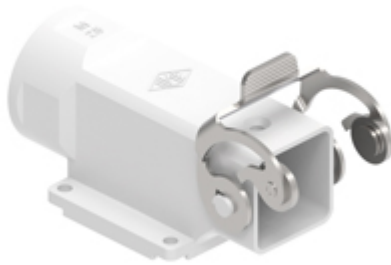


Part number

# MKX AP25



Angled Surface mounting housing, CK series, with 1 stainless steel lever, M25 cable entry, size "21.21", fixing by 4 screws

| Product description                           |   | Material properties              |                        |
|---|---|----------------------------------|------------------------|
| <b>Product type</b>                           | Angled surface mounting housing           | <b>Other materials</b>           | Lever: Stainless steel |
| <b>Series</b>                                 | CK  | <b>Colour</b>                    | RAL 7035 grey          |
| <b>Closing type</b>                           | With 1 lever                              | <b>RoHs conformity</b>           | Compliant              |
| <b>Size</b>                                   | Size "21.21"                              | <b>China RoHs - EFUP</b>         | E                      |
| <b>Cable entry</b>                            | With cable entry<br>M25                   | <b>REACH SVHC substances</b>     | No                     |
| <b>Specification</b>                          | Bulkhead hole closed                      | General ordering information     |                        |
| Technical data                                |   | <b>EAN13 code</b>                | 8015747043601          |
| <b>IP degree of protection</b>                | IP44 - IP66 / IP67 / IP69 with CKR 65 (D) | <b>eCl@ss 8.1</b>                | 27440202               |
| Further technical details                     |   | <b>ETIM 7.0</b>                  | EC000437               |
| <b>Weight</b>                                 | 25,50 g                                   | Packaging Information            |                        |
| <b>Operating temperature range (min, max)</b> | -40°C...+125°C                            | <b>Packaging length</b>          | 375,00 mm              |
|   |   | <b>Packaging height</b>          | 230,00 mm              |
|   |   | <b>Packaging width</b>           | 205,00 mm              |
|   |   | <b>Packaging weight</b>          | 2,86 kg                |
|   |   | <b>Packaging volume</b>          | 17,68 dm <sup>3</sup>  |
|   |   | <b>Packaging description</b>     | Carton box             |
|   |   | <b>Packaging quantity</b>        | 100 Pcs                |
|   |   | <b>Packaging EAN code</b>        | 8015747224765          |
|   |   | <b>Sub-packaging weight</b>      | 0,29 kg                |
|   |   | <b>Sub-packaging description</b> | Carton box             |
|   |   | <b>Sub-packaging quantity</b>    | 10 Pcs                 |
|   |   | <b>Sub-packaging EAN barcode</b> | 8015747303460          |

Part number

# MKX AP25



## Catalogue drawings

