

Part number

MKAXXS AP25



Angled surface mounting housing, EMC series, with 1 lever, M25 cable entry, size "21.21"

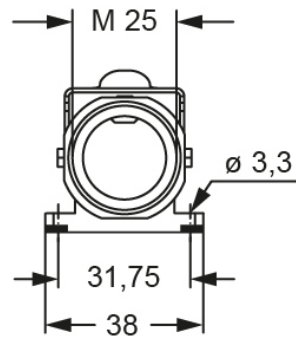
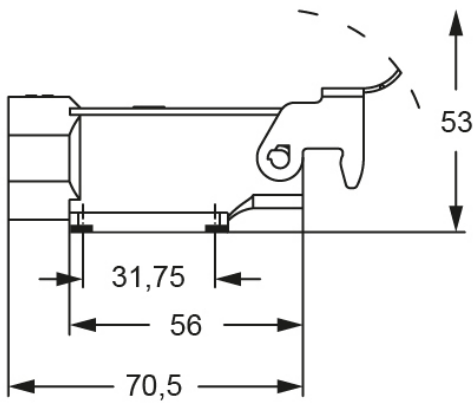
Product description		Material properties	
Product type	Angled surface mounting housing	Main material	Zinc die-cast
Series	EMC	Other materials	Lever: Stainless steel Gasket: Conductive elastomer
Closing type	With 1 lever	Colour	RAL 7040 grey
Size	Size "21.21"	RoHs conformity	Compliant
Cable entry	With cable entry M25	China RoHs - EFUP	E
Technical data		REACH SVHC substances	No
IP degree of protection	IP44 - IP66 / IP67 / IP69 with CKR 65 (D)	Approvals / Standards	
Further technical details		Certifications	DNV, BV
Operating temperature range (min, max)	-40°C...+125°C	UL	ECBT2
		cUL	ECBT8
		General ordering information	
		EAN13 code	8015747259866
		eCl@ss 8.1	27440202
		ETIM 7.0	EC000437

Part number

MKAXXS AP25



Catalogue drawings



Catalogue drawings

