

Part number

FM GD 35



Din-rail EN 60715, FM series, for 4272 boards



| Product description | |
|---|--------------------|
| Product type | Din-rail EN 60715 |
| Series | FM |
| Specification | For FM 4272 boards |
| Further technical details | |
| Operating temperature range (min, max) | -40°C ... +125°C |

| Material properties | |
|----------------------------------|---------------|
| Colour | RAL 7035 grey |
| General ordering information | |
| EAN13 code | 8015747048187 |
| Packaging Information | |
| Sub-packaging description | Plastic bag |
| Sub-packaging quantity | 5 Pcs |
| Sub-packaging EAN barcode | 8015747099455 |

Part number FM GD 35



Catalogue drawings

FM complementary parts and accessories



Box system carrying handle
Climbing irons for box fixing



DIN-rail EN 60715 - Insulated terminal block
Collar - Screws kit - Adhesive label



Description

Part No.

Part No.

Box system carrying handle
- For 3236, 2451, 3251, 3221 and 4272 boards

FM 32 MT

Climbing irons for external wall mounting
- For 3236, 2451, 3251, 3221 and 4272 boards

BC SFT

Sized DIN-rail EN 60715 (35 mm)
With back plates for the positioning at different depths and fixing screws
- For 2451 boards
- For 3236, 3251, 3221 boards
- For 4272 boards

FM GD 18
FM GD 25
FM GD 35

Insulated terminal block, 3 P 25 mm² + 10 P 10 mm²
- For neutral and/or ground, compliant with EN 60998-2-1, stackable (up to 2 units)

FM 2510 MI

collar
- for format 1043 box system

FM 1043 CO

screws kit
- for mounting sockets PQ-PI-PQF-PIF series

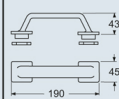
FM 416

adhesive label
- for the identification of the mounted modular devices

FM 18 ET

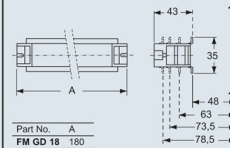
Dimensions in mm

FM 32 MT



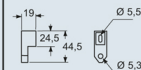
Dimensions in mm

FM GDxx

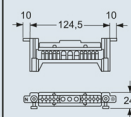


| Part No. | A |
|-----------------|-----|
| FM GD 18 | 180 |
| FM GD 25 | 235 |
| FM GD 35 | 355 |

BC SFT



FM 2510 MI



Dimensions indicated are not binding and may be changed without prior notice.