

Part number

# FM GD 18



Din-rail EN 60715, FM series, for 2451 boards



Product description		Material properties	
<b>Product type</b>	Din-rail EN 60715	<b>Colour</b>	RAL 7035 grey
<b>Series</b>	FM	<b>General ordering information</b>	
<b>Specification</b>	For FM 2451 boards	<b>EAN13 code</b>	8015747048125
Further technical details		Packaging Information	
<b>Weight</b>	79,00 g	<b>Sub-packaging weight</b>	0,79 kg
<b>Operating temperature range (min, max)</b>	-40°C ... +125°C	<b>Sub-packaging description</b>	Plastic bag
		<b>Sub-packaging quantity</b>	10 Pcs
		<b>Sub-packaging EAN barcode</b>	8015747099431

# Part number FM GD 18

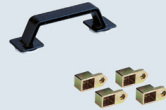


## Catalogue drawings

### FM complementary parts and accessories



**Box system carrying handle**  
Climbing irons for box fixing



**DIN-rail EN 60715 - Insulated terminal block**  
Collar - Screws kit - Adhesive label



Description

Part No.

Part No.

**Box system carrying handle**  
- For 3236, 2451, 3251, 3221 and 4272 boards

**FM 32 MT**

**Climbing irons for external wall mounting**  
- For 3236, 2451, 3251, 3221 and 4272 boards

**BC SFT**

**Sized DIN-rail EN 60715 (35 mm)**  
With back plates for the positioning at different depths and fixing screws  
- For 2451 boards  
- For 3236, 3251, 3221 boards  
- For 4272 boards

**FM GD 18**  
**FM GD 25**  
**FM GD 35**

**Insulated terminal block, 3 P 25 mm<sup>2</sup> + 10 P 10 mm<sup>2</sup>**  
- For neutral and/or ground, compliant with EN 60998-2-1, stackable (up to 2 units)

**FM 2510 MI**

**collar**  
- for format 1043 box system

**FM 1043 CO**

**screws kit**  
- for mounting sockets PQ-PI-PQF-PIF series

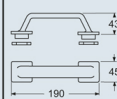
**FM 416**

**adhesive label**  
- for the identification of the mounted modular devices

**FM 18 ET**

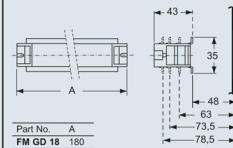
Dimensions in mm

**FM 32 MT**

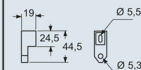


Dimensions in mm

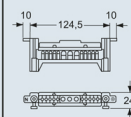
**FM GDxx**



**BC SFT**



**FM 2510 MI**



Dimensions indicated are not binding and may be changed without prior notice.