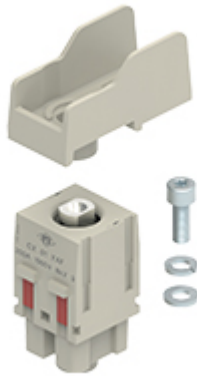


Part number

CX 01 YAF



Female modular insert, Mixo series, screw terminal connections - 90° angled for cable lug, 1 pole, 2 modules, 200 A 1000 V 8 kV 3

Product description

Product type	Modular insert
Series	Mixo
Connection type	Screw terminal connection
Gender	Female
N. of poles	1 pole
Size	2 modules
Specification	Angled MIXO Module

Technical data

Current	200 A
Voltage	1000 V
Rated impulse withstand voltage	8 kV
Pollution degree	3
Rated voltage according to UL/CSA	600 V
Wire cross-section	10,00 mm ² - 70,00 mm ²
Contact type	Turned silver plated
IP degree of protection	IP20 without enclosure, IP65/IP66/IP68/IP69 with enclosure

Further technical details

Insulation resistance	≥ 10 GΩ
Contact resistance	≤ 3 mΩ
Weight	84,00 g
Operating temperature range (min, max)	-40 °C ... +125 °C
UL 94 flammability rating	V-0

Material properties

Main material	Polycarbonate
Other materials	Contacts: copper alloy
Colour	RAL 7032 grey
RoHs conformity	Compliant with exemption 6(c): copper alloy containing up to 4% lead by weight
China RoHs - EFUP	50
REACH SVHC substances	Yes Lead

Approvals / Standards

Certifications	DNV
-----------------------	-----

General ordering information

EAN13 code	8015747284431
eCl@ss 8.1	27440205
ETIM 7.0	EC000438

Packaging Information

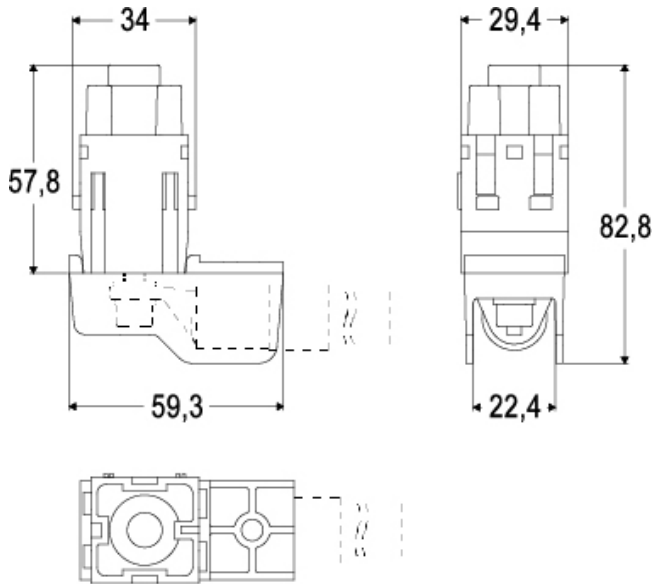
Packaging length	155,00 mm
Packaging height	115,00 mm
Packaging width	130,00 mm
Packaging weight	0,58 kg
Packaging volume	2,32 dm ³
Packaging description	Carton box
Packaging quantity	5 Pcs
Packaging EAN code	8015747291965
Sub-packaging weight	0,12 kg
Sub-packaging description	Plastic bag
Sub-packaging quantity	1 Pcs
Sub-packaging EAN barcode	8015747284455

Part number

CX 01 YAF



Catalogue drawings



Derating curves

CX 01 YA, 1 pole connector inserts (MIXO 200A)
Maximum current load derating diagram

