

Part number

CPF 06 N



Female insert, CP series, screw terminal connection, 6 poles + PE, 35 A 400/690 V 6 kV 3, size "77.62", black colour, with plate

Product description

Product type	Insert
Series	CP
Connection type	Screw terminal connection
Gender	Female
N. of poles	12 poles +
Size	Size 77.62
Specification	Black colour With plate, also for non-prepared conductors

Technical data

Current	35 A
Voltage	400 - 690 V
Rated impulse withstand voltage	6 kV
Pollution degree	3
Rated voltage according to UL/CSA	600 V
Wire cross-section	0,75 mm ² - 6,00 mm ²
AWG size	18 - 10
Contact type	Turned silver plated
IP degree of protection	IP20 without enclosure, IP65/IP66 with enclosure

Further technical details

Characteristics according to EN 61984	35A 400/690V 6kV 3
Mating cycles	≥ 500
Insulation resistance	≥ 10 GΩ
Contact resistance	≤ 0,5 mΩ
Weight	85,30 g
Operating temperature range (min, max)	-40 °C ... +125 °C
UL 94 flammability rating	V-0
Torque for main contact	M4: 1,2 Nm; 10,6 lb.in (Ph1 or 0,8 x 4 mm)

Material properties

Main material	Polycarbonate (PC)
Other materials	Contacts: copper alloy
Colour	RAL 9005 black
RoHs conformity	Compliant with exemption 6(c): copper alloy containing up to 4% lead by weight
China RoHs - EFUP	50
REACH SVHC substances	Yes Lead
SCIP number	1a9c93ff-0445-4a16-81e3-1609ac5274d6

Approvals / Standards

Reference standard	EN 61984:2009-06
Certifications	CSA, CQC, DNV, BV, EAC
UL	ECBT2

General ordering information

EAN13 code	8015747036818
eCl@ss 8.1	27440205
ETIM 7.0	EC000438

Packaging Information

Packaging length	210,00 mm
Packaging height	200,00 mm
Packaging width	130,00 mm
Packaging weight	1,92 kg
Packaging volume	5,46 dm ³
Packaging description	Carton box
Packaging quantity	20 Pcs
Packaging EAN code	8015747261630
Sub-packaging length	87,00 mm
Sub-packaging height	36,00 mm
Sub-packaging width	180,00 mm
Sub-packaging weight	0,48 kg
Sub-packaging volume	0,56 dm ³
Sub-packaging description	Carton tray
Sub-packaging quantity	5 Pcs
Sub-packaging EAN barcode	8015747036825

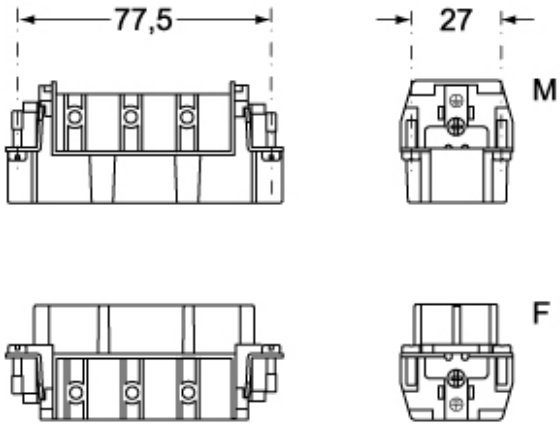
Part number

CPF 06 N

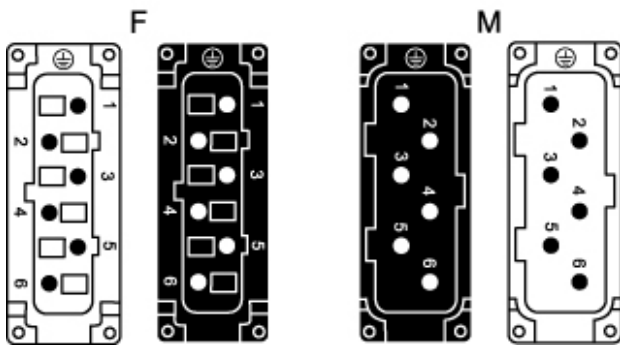


Catalogue drawings

CPM 06 (N)



CPF 06 (N)



Catalogue drawings

