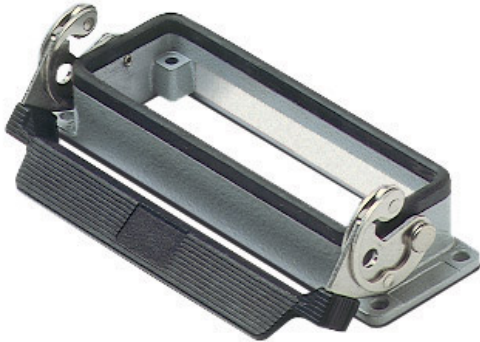


Part number

CMI 16 L



Bulkhead mounting housing, 830V series, with 1 lever, size "104.27"



Product description		Material properties	
Product type	Bulkhead mounting housing	Colour	RAL 7040 grey
Series	830V	RoHs conformity	Compliant
Closing type	With 1 lever	China RoHs - EFUP	E
Size	Size 104.27	REACH SVHC substances	No
Cable entry	Without cable entry	Approvals / Standards	
Technical data		Certifications	DNV, BV
IP degree of protection	IP65 / IP66 / IP69	UL	ECBT2
Further technical details		cUL	ECBT8
Weight	141,50 g	General ordering information	
Operating temperature range (min, max)	-40°C...+125°C	EAN13 code	8015747030816
		Packaging Information	
		Packaging length	160,00 mm
		Packaging height	130,00 mm
		Packaging width	270,00 mm
		Packaging weight	1,61 kg
		Packaging volume	5,62 dm ³
		Packaging description	Carton box
		Packaging quantity	10 Pcs
		Packaging EAN code	8015747030823
		Sub-packaging weight	0,81 kg
		Sub-packaging description	Plastic packaging
		Sub-packaging quantity	5 Pcs
		Sub-packaging EAN barcode	8015747030830

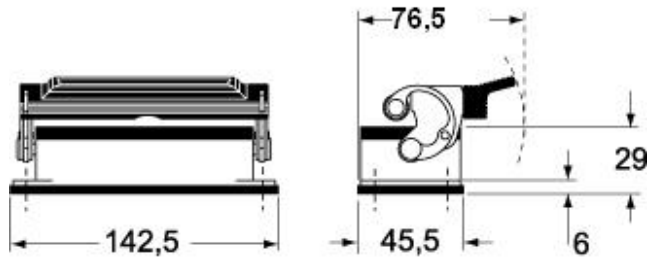
Part number

CMI 16 L

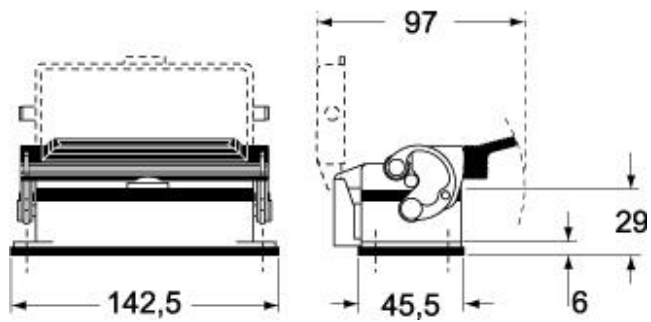


Catalogue drawings

CMI L



CMI LS



Catalogue drawings

