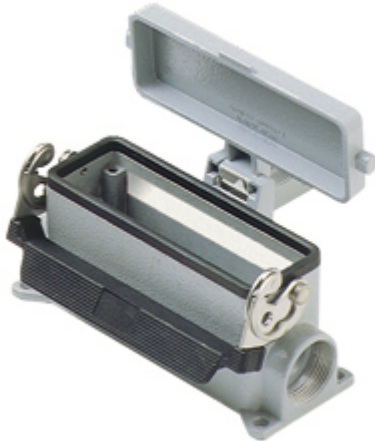


Part number

# CMAP 16LS229



Surface mounting housing, 830V series, with 1 lever, Pg29 x 2 cable entry, size "104.27", high construction, with metal cover

## Product description

<b>Product type</b>	Surface mounting housing
<b>Series</b>	830V
<b>Closing type</b>	With 1 lever
<b>Size</b>	Size 104.27
<b>Cable entry</b>	With cable entry Pg29 x 2
<b>Specification</b>	High construction, with metal cover

## Technical data

**IP degree of protection** IP65

## Further technical details

**Operating temperature range (min, max)** -40°C...+125°C

## Material properties

<b>Colour</b>	RAL 7040 grey
<b>RoHs conformity</b>	Compliant
<b>China RoHs - EFUP</b>	E
<b>REACH SVHC substances</b>	No

## Approvals / Standards

<b>Certifications</b>	DNV, BV
<b>UL</b>	ECBT2
<b>cUL</b>	ECBT8

## General ordering information

**EAN13 code** 8015747029643

## Packaging Information

<b>Sub-packaging description</b>	Plastic packaging
<b>Sub-packaging quantity</b>	5 Pcs
<b>Sub-packaging EAN barcode</b>	8015747104760

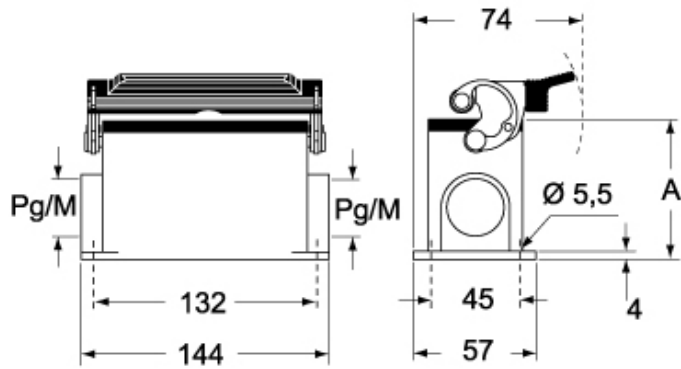
Part number

# CMAP 16LS229

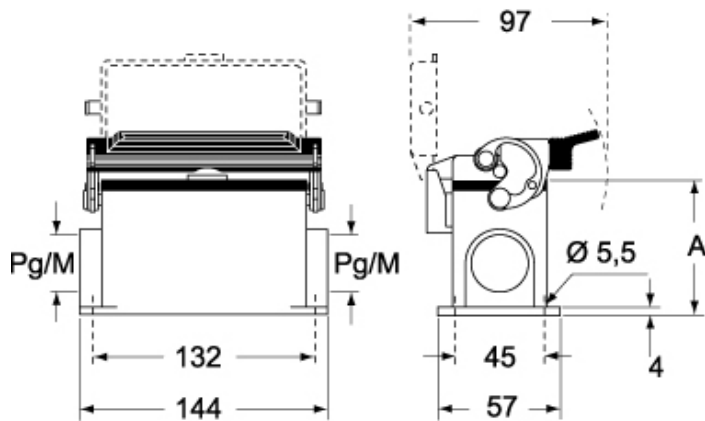


Catalogue drawings

## CMP L CMAP L - MMP L MMAP L



## CMP LS CMAP LS - MMP LS MMAP LS



	<b>A</b>
<b>CMP L / MMP L</b>	63
<b>CMAP L / MMAP L</b>	80
<b>CMP LS / MMP LS</b>	63
<b>CMAP LS / MMAP LS</b>	80