

Part number

# CKAX 03 ILS



Bulkhead mounting housing, CKA series, with 1 lever, size "21.21", for female inserts, with gasket and self-closing metal cover

Product description		Material properties	
<b>Product type</b>	Bulkhead mounting housing	<b>Main material</b>	Zinc die-cast
<b>Series</b>	CKA	<b>Other materials</b>	Lever: Stainless steel Gasket: TPE
<b>Closing type</b>	With 1 lever	<b>Colour</b>	RAL 7040 grey
<b>Size</b>	Size "21.21"	<b>RoHs conformity</b>	Compliant
<b>Cable entry</b>	Without cable entry	<b>China RoHs - EFUP</b>	E
<b>Specification</b>	For female inserts, with gasket and self-closing metal cover	<b>REACH SVHC substances</b>	No
Technical data		Approvals / Standards	
<b>IP degree of protection</b>	IP44 - IP66 / IP67 / IP69 with CKR 65 (D)	<b>UL</b>	ECBT2
Further technical details		<b>cUL</b>	ECBT8
<b>Weight</b>	60,70 g	General ordering information	
<b>Operating temperature range (min, max)</b>	-40°C...+125°C	<b>EAN13 code</b>	8015747002417
		<b>eCl@ss 8.1</b>	27440202
		<b>ETIM 7.0</b>	EC000437
		Packaging Information	
		<b>Sub-packaging length</b>	185,00 mm
		<b>Sub-packaging height</b>	40,00 mm
		<b>Sub-packaging width</b>	155,00 mm
		<b>Sub-packaging weight</b>	0,61 kg
		<b>Sub-packaging volume</b>	1,15 dm <sup>3</sup>
		<b>Sub-packaging description</b>	Carton box
		<b>Sub-packaging quantity</b>	10 Pcs
		<b>Sub-packaging EAN barcode</b>	8015747002431

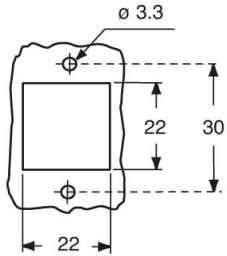
Part number

# CKAX 03 ILS

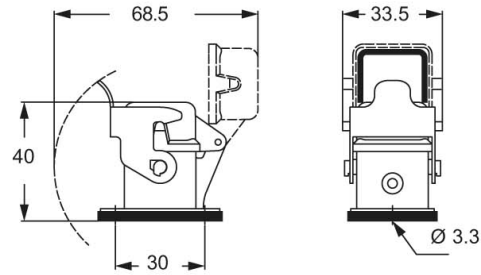


## Catalogue drawings

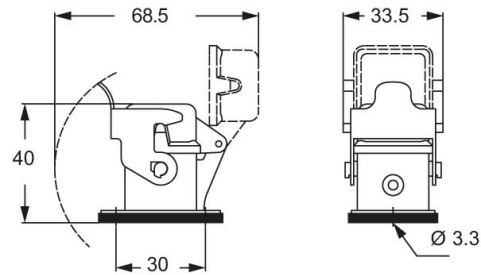
panel cut-out for enclosures, dimensions in mm



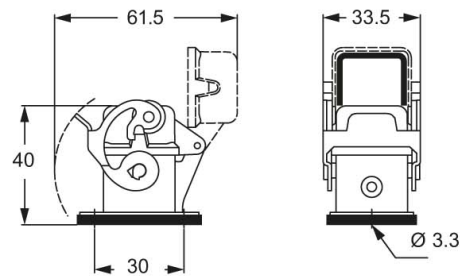
**CKA ILS**



**CKA ILSA**



**CKAX ILS**



**CKAX ILSA**

