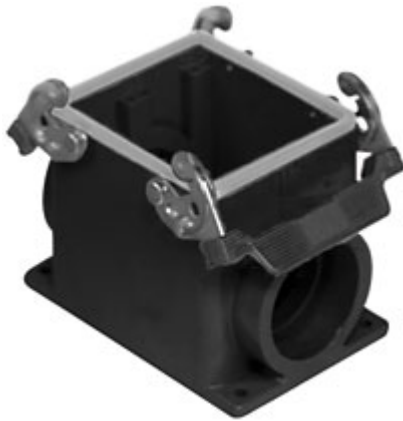


Part number

# CHPW 32



Surface mounting housing, W-TYPE series,  
with 2 levers, Pg36 cable entry, size "77.62"

Product description		Material properties	
<b>Product type</b>	Surface mounting housing	<b>Other materials</b>	Lever: Stainless steel, polyamide (PA)
<b>Series</b>	W-TYPE	<b>Colour</b>	RAL 9005 black
<b>Closing type</b>	With 2 levers	<b>RoHs conformity</b>	Compliant
<b>Size</b>	Size 77.62	<b>China RoHs - EFUP</b>	E
<b>Cable entry</b>	With cable entry Pg36	<b>REACH SVHC substances</b>	No
Technical data		Approvals / Standards	
<b>IP degree of protection</b>	IP65 / IP66 / IP69	<b>Certifications</b>	DNV, BV
Further technical details		<b>UL</b>	ECBT2
<b>Weight</b>	800,00 g	<b>cUL</b>	ECBT8
<b>Operating temperature range (min, max)</b>	-40°C...+125°C	General ordering information	
		<b>EAN13 code</b>	8015747175586
		Packaging Information	
		<b>Packaging length</b>	290,00 mm
		<b>Packaging height</b>	140,00 mm
		<b>Packaging width</b>	215,00 mm
		<b>Packaging weight</b>	3,41 kg
		<b>Packaging volume</b>	8,73 dm <sup>3</sup>
		<b>Packaging description</b>	Carton box
		<b>Packaging quantity</b>	4 Pcs
		<b>Packaging EAN code</b>	8015747225311
		<b>Sub-packaging weight</b>	0,85 kg
		<b>Sub-packaging description</b>	Plastic packaging
		<b>Sub-packaging quantity</b>	1 Pcs
		<b>Sub-packaging EAN barcode</b>	8015747175678