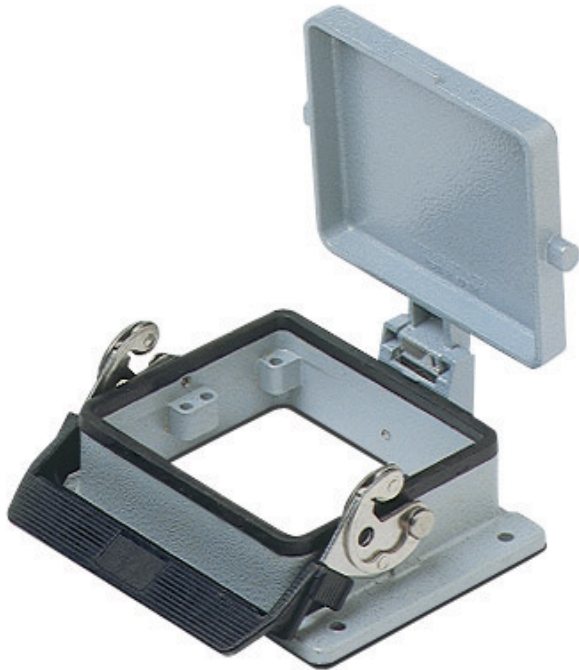


Part number

# CHI 32 LS



Bulkhead mounting housing, C-TYPE series, with 1 lever, size "77.62", with metal cover

#### Product description

|                      |                           |
|----------------------|---------------------------|
| <b>Product type</b>  | Bulkhead mounting housing |
| <b>Series</b>        | C-TYPE                    |
| <b>Closing type</b>  | With 1 lever              |
| <b>Size</b>          | Size 77.62                |
| <b>Cable entry</b>   | Without cable entry       |
| <b>Specification</b> | With metal cover          |

#### Technical data

**IP degree of protection** IP65

#### Further technical details

|   |                |
|---|----------------|
| <b>Weight</b>                                 | 314,50 g       |
| <b>Operating temperature range (min, max)</b> | -40°C...+125°C |

#### Material properties

|                              |   |
|------------------------------|---|
| <b>Other materials</b>       | Lever: Stainless steel, polyamide (PA)<br>Gasket: NBR |
| <b>Colour</b>                | RAL 7040 grey   |
| <b>RoHs conformity</b>       | Compliant   |
| <b>China RoHs - EFUP</b>     | E   |
| <b>REACH SVHC substances</b> | No  |

#### Approvals / Standards

|                       |         |
|-----------------------|---------|
| <b>Certifications</b> | DNV, BV |
| <b>UL</b>             | ECBT2   |
| <b>cUL</b>            | ECBT8   |

#### General ordering information

|                   |               |
|-------------------|---------------|
| <b>EAN13 code</b> | 8015747018593 |
| <b>eCl@ss 8.1</b> | 27440202      |
| <b>ETIM 7.0</b>   | EC000437      |

#### Packaging Information

|                                  |                      |
|----------------------------------|----------------------|
| <b>Packaging length</b>          | 270,00 mm            |
| <b>Packaging height</b>          | 130,00 mm            |
| <b>Packaging width</b>           | 135,00 mm            |
| <b>Packaging weight</b>          | 1,39 kg              |
| <b>Packaging volume</b>          | 4,74 dm <sup>3</sup> |
| <b>Packaging description</b>     | Carton box           |
| <b>Packaging quantity</b>        | 4 Pcs                |
| <b>Packaging EAN code</b>        | 8015747212861        |
| <b>Sub-packaging weight</b>      | 0,35 kg              |
| <b>Sub-packaging description</b> | Plastic packaging    |
| <b>Sub-packaging quantity</b>    | 1 Pcs                |
| <b>Sub-packaging EAN barcode</b> | 8015747018616        |

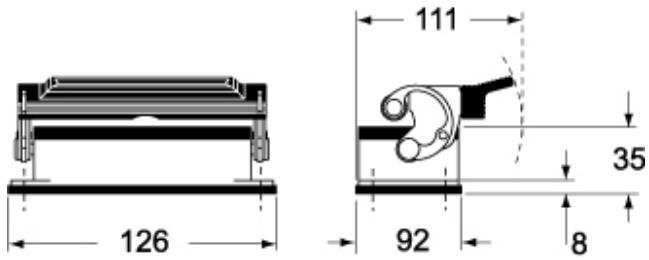
Part number

# CHI 32 LS

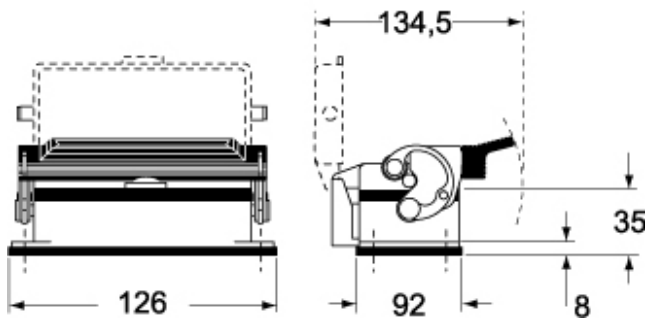


Catalogue drawings

## CHI L



## CHI LS



Catalogue drawings

