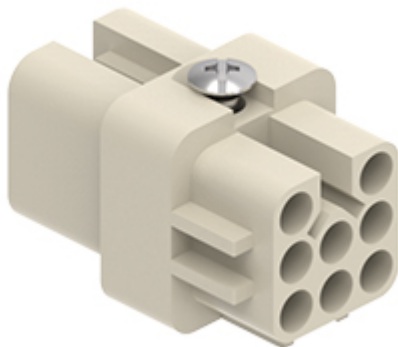


Part number  
**CDF 07**



Female insert, CD series, crimp connection, 7 poles + PE, 10 A 250 V 4 kV 3, size "21.21"

| Product description    |   |
|------------------------|---|
| <b>Product type</b>    | Insert                                  |
| <b>Series</b>          | CD                                      |
| <b>Connection type</b> | Crimp connection                        |
| <b>Gender</b>          | Female                                  |
| <b>N. of poles</b>     | 7 poles +                               |
| <b>Size</b>            | Size "21.21"                            |
| <b>Specification</b>   | Standard & HNM (High Number of Matings) |

| Technical data                           |   |
|--|---|
| <b>Current</b>                           | 10 A  |
| <b>Voltage</b>                           | 250 V   |
| <b>Rated impulse withstand voltage</b>   | 4 kV  |
| <b>Pollution degree</b>                  | 3   |
| <b>Rated voltage according to UL/CSA</b> | 600 V   |
| <b>IP degree of protection</b>           | IP20 without enclosure, IP44/IP66/IP67/IP68/IP69 with enclosure |

| Further technical details                     |   |
|---|---|
| <b>Characteristics according to EN 61984</b>  | 10A 250V 4kV 3; 10A 230/400V 4kV 2          |
| <b>Mating cycles</b>                          | ≥ 500                                       |
| <b>Insulation resistance</b>                  | ≥ 10 GΩ                                     |
| <b>Contact resistance</b>                     | ≤ 3 mΩ                                      |
| <b>Weight</b>                                 | 9,00 g                                      |
| <b>Operating temperature range (min, max)</b> | -40 °C ... +125 °C                          |
| <b>Conductors stripping length</b>            | 8 mm (6 mm for 2,5 mm <sup>2</sup> )        |
| <b>UL 94 flammability rating</b>              | V-0   |
| <b>Tightening torque for PE connection</b>    | M4: 1,2 Nm, 10,6 lb.in (Ph2 or 1,0x5,5mm )  |
| <b>Tightening torque for fixing screws</b>    | M3: 0,5 Nm; 4,4 lb.in (Ph1 or 0,8 x 5,5 mm) |

| Material properties          |  |
|------------------------------|--|
| <b>Main material</b>         | Polycarbonate (PC)   |
| <b>Colour</b>                | RAL 7032 grey  |
| <b>RoHs conformity</b>       | Compliant with exemption 6(c): copper alloy containing up to 4% lead by weight |
| <b>China RoHs - EFUP</b>     | 50   |
| <b>REACH SVHC substances</b> | Yes<br>Lead  |
| <b>SCIP number</b>           | 5a97d67d-dd49-45fe-94c0-411f951ef5ee   |

| Approvals / Standards     |                         |
|---------------------------|-------------------------|
| <b>Reference standard</b> | EN 61984:2009-06        |
| <b>Certifications</b>     | CSAc, CQC, DNV, BV, EAC |
| <b>UL</b>                 | ECBT2                   |
| <b>cUL</b>                | ECBT8                   |

| General ordering information |               |
|------------------------------|---------------|
| <b>EAN13 code</b>            | 8015747014274 |
| <b>eCl@ss 8.1</b>            | 27440205      |
| <b>ETIM 7.0</b>              | EC000438      |

| Packaging Information            |                      |
|----------------------------------|----------------------|
| <b>Packaging length</b>          | 210,00 mm            |
| <b>Packaging height</b>          | 200,00 mm            |
| <b>Packaging width</b>           | 130,00 mm            |
| <b>Packaging weight</b>          | 2,09 kg              |
| <b>Packaging volume</b>          | 5,46 dm <sup>3</sup> |
| <b>Packaging description</b>     | Carton box           |
| <b>Packaging quantity</b>        | 200 Pcs              |
| <b>Packaging EAN code</b>        | 8015747103169        |
| <b>Sub-packaging length</b>      | 197,00 mm            |
| <b>Sub-packaging height</b>      | 35,00 mm             |
| <b>Sub-packaging width</b>       | 113,00 mm            |
| <b>Sub-packaging weight</b>      | 0,42 kg              |
| <b>Sub-packaging volume</b>      | 0,78 dm <sup>3</sup> |
| <b>Sub-packaging description</b> | Carton tray          |
| <b>Sub-packaging quantity</b>    | 40 Pcs               |
| <b>Sub-packaging EAN barcode</b> | 8015747103176        |

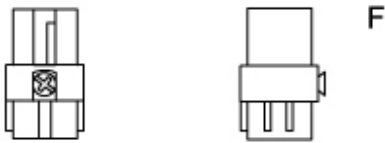
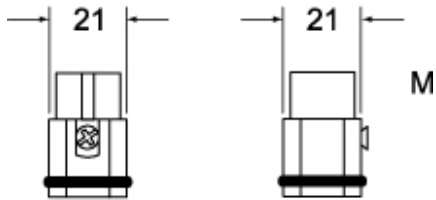
Part number

# CDF 07



Catalogue drawings

**CDM 07 (N)**



**CDF 07 (N)**



Catalogue drawings

diagram CD 07 and 08 poles

