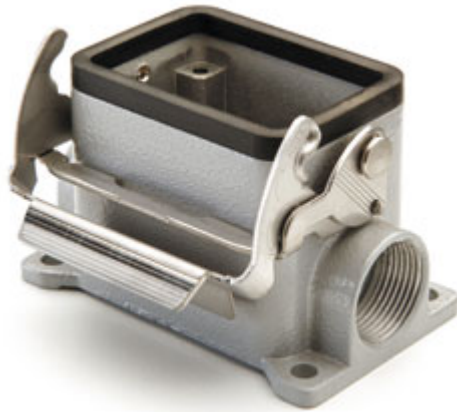


Part number

# C7P 06 L



Surface mounting housing, V-TYPE series, with 1 lever, Pg16 cable entry, size "44.27"

#### Product description

<b>Product type</b>	Surface mounting housing
<b>Series</b>	V-TYPE
<b>Closing type</b>	With 1 lever
<b>Size</b>	Size 44.27
<b>Cable entry</b>	With cable entry Pg16

#### Technical data

<b>IP degree of protection</b>	IP66 / IP67 / IP69
--------------------------------	--------------------

#### Further technical details

<b>Weight</b>	197,00 g
<b>Operating temperature range (min, max)</b>	-40°C...+125°C

#### Material properties

<b>Other materials</b>	Lever: Stainless steel Gasket: NBR
<b>Colour</b>	RAL 7040 grey
<b>RoHs conformity</b>	Compliant
<b>China RoHs - EFUP</b>	E
<b>REACH SVHC substances</b>	No

#### Approvals / Standards

<b>Certifications</b>	DNV, BV
<b>UL</b>	ECBT2
<b>cUL</b>	ECBT8

#### General ordering information

<b>EAN13 code</b>	8015747093538
-------------------	---------------

#### Packaging Information

<b>Packaging length</b>	285,00 mm
<b>Packaging height</b>	170,00 mm
<b>Packaging width</b>	190,00 mm
<b>Packaging weight</b>	4,04 kg
<b>Packaging volume</b>	9,21 dm <sup>3</sup>
<b>Packaging description</b>	Carton box
<b>Packaging quantity</b>	20 Pcs
<b>Packaging EAN code</b>	8015747178174
<b>Sub-packaging weight</b>	1,01 kg
<b>Sub-packaging description</b>	Plastic packaging
<b>Sub-packaging quantity</b>	5 Pcs
<b>Sub-packaging EAN barcode</b>	8015747178181

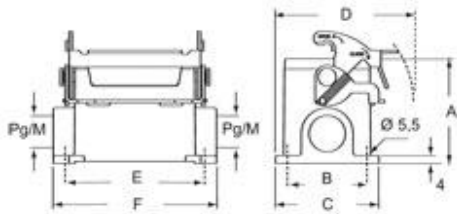
Part number

# C7P 06 L



## Catalogue drawings

C7P L - C7AP L M7P L - M7AP L



	A	B	C	D	E	F
C7P/M7P 06 L	53	40	52	70	70	82
C7AP/M7AP 06 L	73	45	57	72,5	70	82

---