


Part number

TM 32123 IR



Interlocked switched socket-outlet, TM series, 2 poles + PE, 12 h (white), 32 A, with compartment for modular units, 6 DIN-rail modules EN 60715, with base box

Product description

Product type	Interlocked switched socket-outlet
Series	TM..IR/KIR
N. of poles	2 poles + 
Clock position	12
Specification	With compartment for modular units, 6 DIN-rail modules EN 60715 With base box

Technical data

Current	32 A
Voltage	ins. transformer
IP degree of protection	IP66 / IP67

Further technical details

Operating temperature range (min, max)	-25°C ... +40°C
UL 94 flammability rating	V-2
IK rating (impact degree of protection)	IK10

Material properties

Colour	RAL 7012 grey, RAL 9010 white
---------------	-------------------------------

Approvals / Standards

Reference standard	EN 60309-1, -2 e -4
---------------------------	---------------------

General ordering information

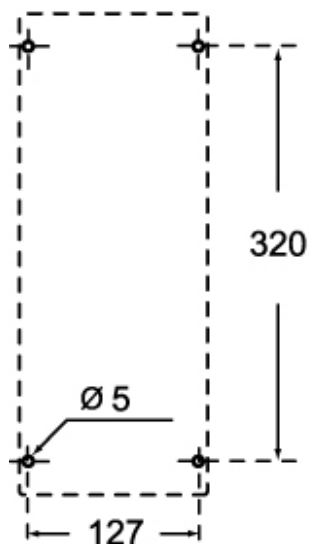
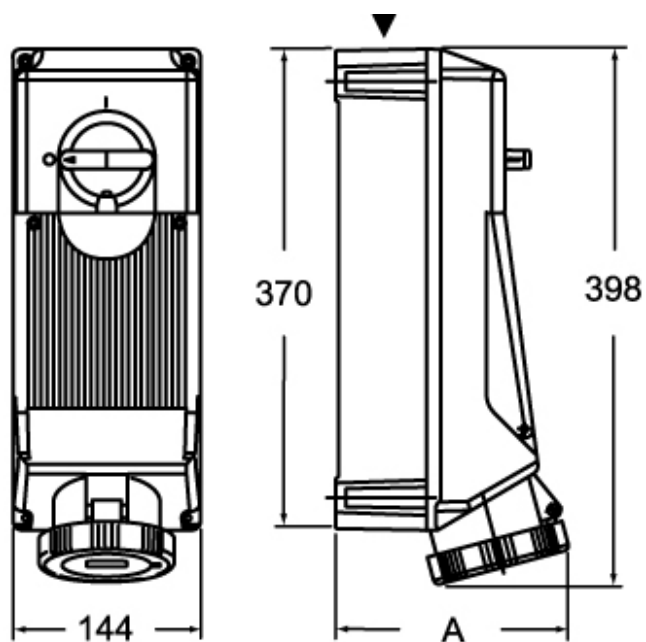
EAN13 code	8015747162111
-------------------	---------------

Part number

TM 32123 IR



Catalogue drawings



	A
2P+⊕	162
3P+⊕	162
3P+N+⊕	169

Notes