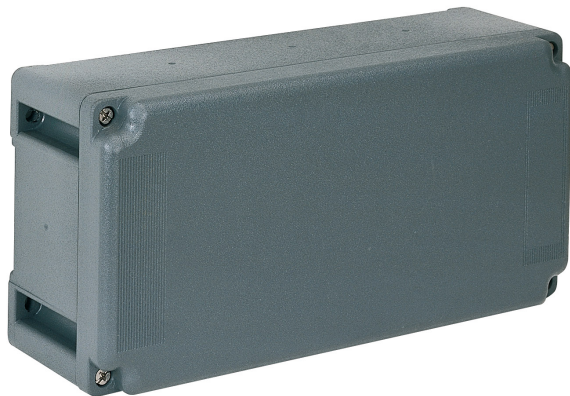


Part number

TM 2914 DB



Box, TM series, with fixed cover, for 2 TM 1456 TB plates

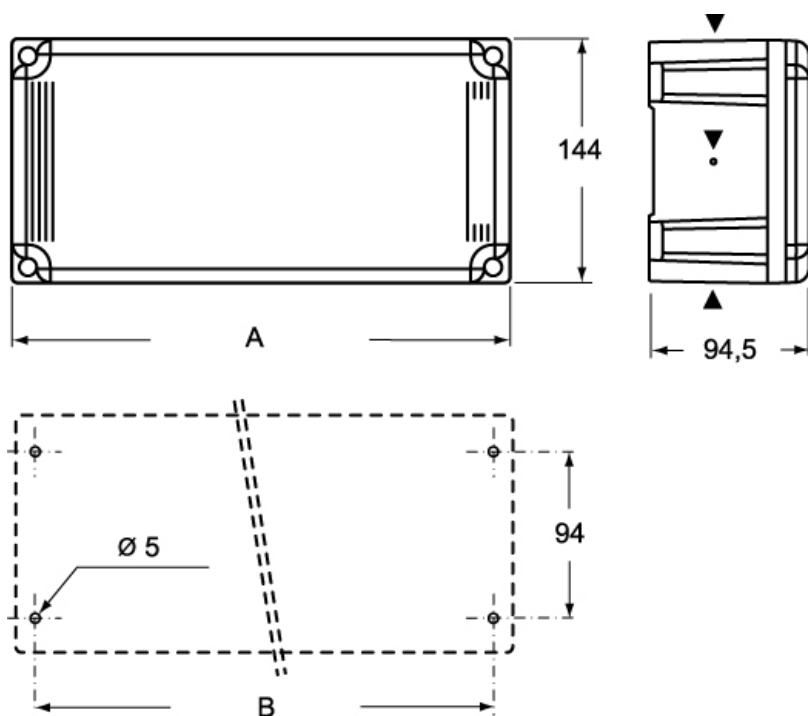
Product description		Material properties	
Product type	Box	Colour	RAL 7012 grey
Series	TM		Compliant with exemption 6(c): copper alloy containing up to 4% lead by weight
Specification	With fixed cover For 2 TM 1456 TB plates	RoHs conformity	50
Technical data		China RoHs - EFUP	Yes
IP degree of protection	IP66 / IP67	REACH SVHC substances	Lead
Further technical details		SCIP number	B0214dad-d2d9-4e91-a5b4-f4c9b4612083
Weight	810,00 g	General ordering information	
Operating temperature range (min, max)	-25°C ... +40°C	EAN13 code	8015747101431
IK rating (impact degree of protection)	IK10	Packaging Information	
		Packaging length	310,00 mm
		Packaging height	175,00 mm
		Packaging width	205,00 mm
		Packaging weight	1,86 kg
		Packaging volume	11,12 dm ³
		Packaging description	Carton box
		Packaging quantity	2 Pcs
		Packaging EAN code	8015747101646
		Sub-packaging weight	0,93 kg
		Sub-packaging description	Plastic packaging
		Sub-packaging quantity	1 Pcs
		Sub-packaging EAN barcode	8015747101653

Part number

TM 2914 DB



Catalogue drawings



	A	B
TM 2314 DB	230	213
TM 2614 DB	260	243
TM 2914 DB	290	273

Notes